

# Priority Manufacturing Prospector PE220

*INFORMATION  
&  
OPERATING  
INSTRUCTIONS*

**READ AND UNDERSTAND THESE INSTRUCTIONS  
BEFORE OPERATING THE MACHINE**

*Manufactured Expressly for*

**Jon-Don**

400 Medinah Road  
Roselle, IL 60172  
800-556-6366 • JONDON.COM

## Contents:

Machine Specifications	2	Care & Maintenance	4
Record Important Information	2	Views of Machine	5
Safety Information & Cautions	3	Set Up & Operating Instructions	6
Your New Machine	4	Warranty	7
System Features	4	Troubleshooting	8
Chemicals	4	Parts List	9
Tools & Accessories	4	Exploded View	10

## Machine Specifications:

	<b>Prospector PE 220 120V</b>
Pump	220 psi diaphragm, with internal pressure switch
Vacuum	<b>Dual 2 Stage 145" lift-97 CFM</b>
Heater	1750 watt
Solution Tank Capacity	15 Gal
Recovery Tank Capacity	15 Gal
Vacuum Shut-off	Ball Float
Dimensions	36-3/4" H 23-1/2" W 32" L
Weight	89 lbs
Warranty	See Below

## Machine and Purchase Specifications:

**RECORD AND RETAIN THIS IMPORTANT INFORMATION**

Prospector PE220

Serial Number: \_\_\_\_\_

Purchase Date: \_\_\_\_\_

Write purchase location and phone number below

\_\_\_\_\_

\_\_\_\_\_

***And don't forget to register your purchase to activate your warranty***

## CRITICAL SAFETY INFORMATION & CAUTIONS

The acceptable use of this machine is for commercial/professional cleaning, for example, in hotels, schools, hospitals, and offices, rather than for personal housekeeping.

NOTE: Read all instructions before using this machine. Improper use or misuse of the machine can result in personal injury or property damage.



To reduce the risk of personal injury or property damage, follow these procedures:

- Connect to a properly grounded outlet only.
- Do not operate the machine in an explosive environment.
- Do NOT use Solvents.
- Never add water over 120°F/ 49°C to the solution tank.
- Do not pick up anything that is burning or smoking, such as cigarette, matches or hot ashes, or any health endangering dusts. Do not use to pick up flammable or combustible liquids such as gasoline or use in areas where they may be present.
- To avoid electric shock, do not expose to rain or snow and keep from extremes in temperature. Store in a heated location. Use the machine indoors. Do not use outdoors.
- Do not use this machine to dry vacuum before wet cleaning.
- Do not use with damaged cord or plug. If the machine is not working as it should, has been dropped, damaged, left outdoors or flooded with water, return it to a service center.
- Do not leave the machine unattended when it is plugged in. Unplug the unit from the outlet when not in use and before servicing.
- Use only as described in this manual. Use only the manufacturers recommended attachments.
- Do not handle the plug, the cord, or the machine with wet hands.
- Extension cords must be 12/3 and no longer than 50 feet. Replace the cord or plug immediately if the ground prong becomes damaged.
- Do not put any object into opening. Do not use with any opening blocked; keep free of dust, lint, hair, and anything that may reduce air flow.
- Keep loose clothing, hair, fingers and all parts of body away from openings and moving parts.
- Liquid ejected at the spray nozzle could be dangerous as a result of its temperature, pressure, or chemical content.

**READ AND SAVE THESE INSTRUCTIONS**

## YOUR NEW MACHINE:

When you receive your new machine, examine the packaging for signs of shipping damage. Carefully unpack the machine and inspect it. If you see evidence of damage to the container or the contents, contact the freight carrier immediately.

Additionally, ensure all parts and accessories are present; if you notice anything missing, contact your distributor without delay.

## SYSTEM FEATURES:

**HEAT:** The Prospector PE220 has a built-in heater for the solution. An ON/Off switch activates the heater. If you prefer to clean without the added effectiveness of heat, simply do not turn on the heat switch.

**VACUUM:** The vacuum motors provides an excellent ratio of water lift to air movement (see specs, page2). Carpets should dry quickly if not over-wetting while cleaning.

**PUMP:** The pump is a 'demand' style – it only runs when there is demand for spray. This feature increases the life of the pump.

## CHEMICALS:

The use of clear water in the machine is recommended, within the application of properly diluted cleaner as a pre-spray on the area to be cleaned; however, you may mix water and cleaning chemicals in a bucket -- according to directions on the chemical label -- and then pour into the solution tank. If you chose to use chemicals in the machine, always use a cleaner with a pH as close to neutral as possible to avoid premature wear of the pump, seals, and/or other components. Damage caused by the use of strong chemicals is not covered by the warranty.

The use of powder chemicals is discouraged; unless they are mixed very thoroughly and rinsed out completely at the end of the job, powdered cleaners could cause a build-up in the pump, lines, heater and/or quick disconnect. Any problem caused by a chemical build-up is not covered by warranty.

If foaming occurs as you clean, use a defoamer, either in the recovery tank or on the area being cleaned, to prevent overflow which can cause water damage to machine components.

## TOOLS & ACCESSORIES:

Use only manufacturer's recommended tools and accessories. If the spray valve on your cleaning tool begins to leak or if the spray tips get worn and are no longer providing a nice even spray pattern, order replacements from your distributor.

## CARE AND MAINTENANCE:

For continual peak operation, clean the internal plumbing by rinsing with clear water at the end of each job. About once a month, rinse the machine with a commercial flushing compound to break-up any mineral or chemical accumulation that may have formed from the use of hard water or chemicals.

The vacuum motor and the pump do not require any scheduled maintenance; however, the vacuum motor may require replacement brushes after 750-1000 hours.

To help maintain a professional image; clean the exterior of the machine with an all purpose detergent, and protect it with automobile interior polish. Lubricate the wheels, castors, and quick disconnects with an all purpose, silicone spray.

**VIEWS OF THE MACHINE:**

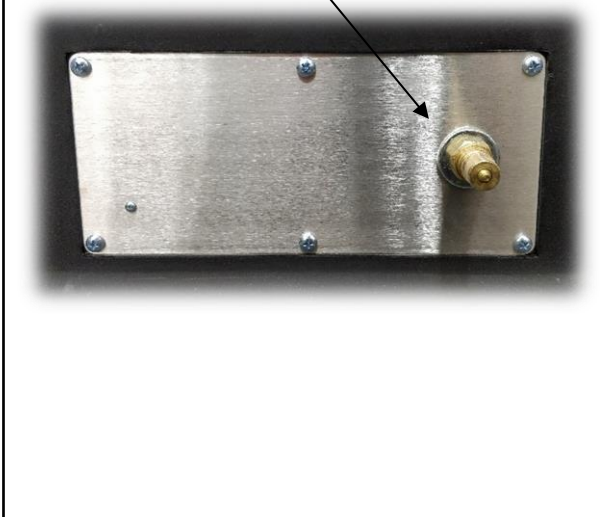
**FRONT VIEW**



**REAR VIEW**



Connect Solution Hose Here



**Vacuum #1 Switch**

**Vacuum #2 Switch**

**Pump/Heat Switch**

## SET-UP AND OPERATION:

1. Before each use, inspect the machine, hoses, and cleaning tool for cleanliness and completeness, Ensure the spray nozzles on the cleaning tool are tight and that the ball float in the recovery tank is clean and operational.
2. Close the clear, screw-on lid on the recovery tank, and screw the cap onto the drain hose.
3. Fill the holding tank with clear water.

NOTE: the heater on this machine is designed to provide nearly instant hot water for cleaning; if you use warm water in the solution tank it would increase heater proficiency. Never use water above 120°F or 49°C in the solution tank.

4. Turn off all the switches. Plug the power cord into a properly grounded outlet.
5. Connect the solution hose and the vacuum hose to the machine and to the cleaning tool.
6. Turn the pump ON and spray through the tool for a few seconds to fill the heater and lines with fluid.
7. Turn the heat switch ON and wait two minutes for the heater to reach operating temperature.

NOTE: The pump will run only while you are spraying.

8. Pre-spray the area to be cleaned with the detergent of your choice.

NOTE: If you choose to add a detergent to the solution tank, be sure to mix well, and always follow the use & dilution instructions on the chemical label. Use a chemical with a pH between 5 and 10 to reduce the likelihood of premature wear to the pump and other seals.

9. Turn on the vacuum motors.
10. Begin cleaning, following industry accepted practices.

NOTE: Use defoamer any time foaming occurs in the recovery tank to prevent damage to the motor or other components.

NOTE: Foam will not lift the ball float.

12. Monitor the water level in the solution tank. Do not let the pump run dry.
13. When the solution tank gets low, turn off the pump and vacuum, fill the solution tank, empty and clean the recovery tank.
14. When finished with the job, remove any unused solution from the solution tank, and run a few gallons of clean water through the system. Drain the recovery tank by opening the drain hose over a drain or a bucket. Release any residual pressure from the cleaning tool before disconnecting the hoses from the cleaning tool.

## AUTO VACUUM SHUT OFF:

When the recovery tank is full, the ball float will shut off the suction to prevent the machine from overflowing. NOTE: The float may not work if there is too much foam in the tank. Always use defoamer to prevent overflow.

## HEAT SYSTEM:

The heater holds a small amount of water, so to maintain hot water for the entire cleaning job, spray for short periods and then stop spraying during a recovery stroke. Continuous spraying will prevent the water from pausing long enough in the heater to get hot.

## TROUBLESHOOTING



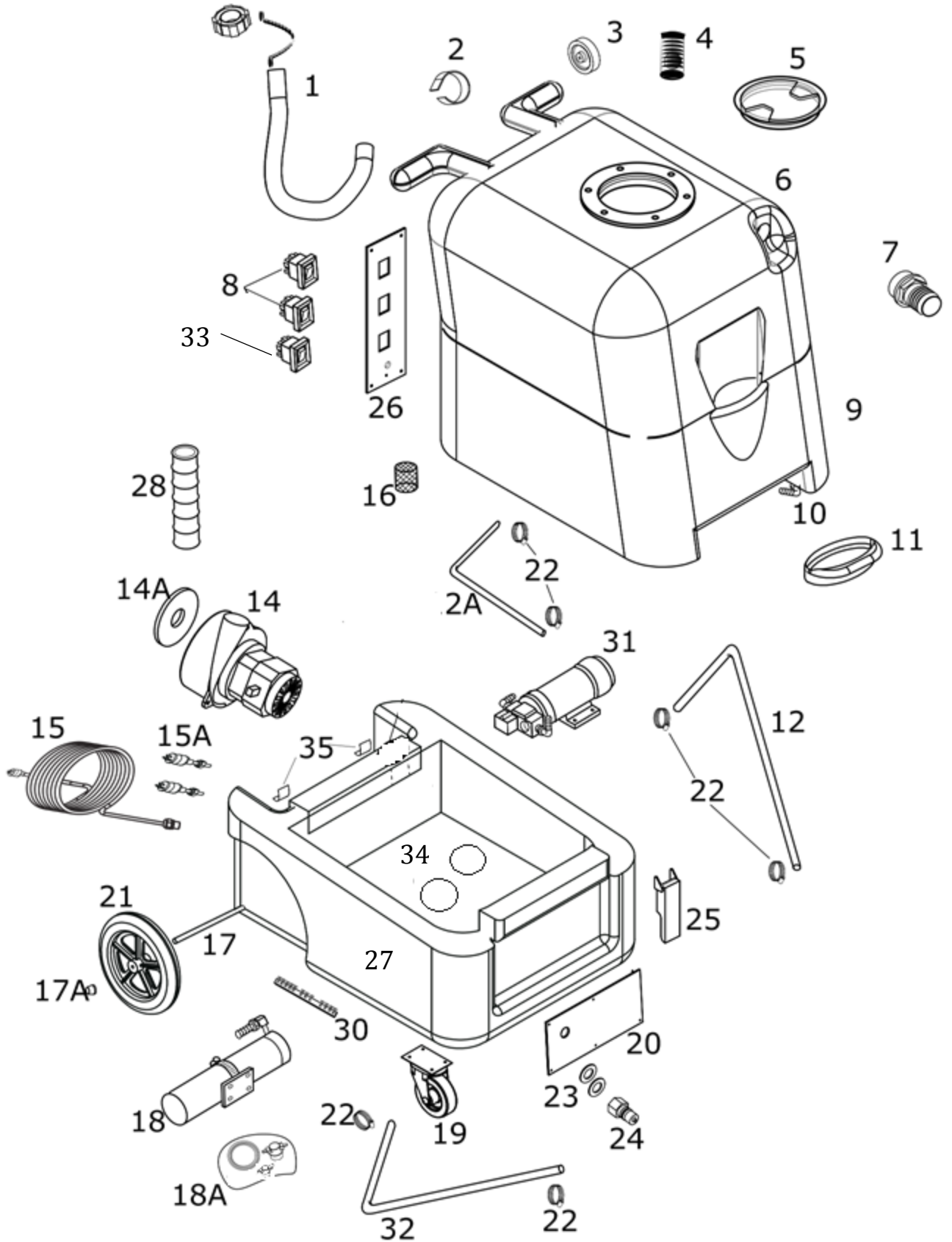
**ALWAYS UNPLUG THE MACHINE BEFORE  
DISCONNECTING OR CONNECTING ANY WIRES OR  
COMPONENTS**

<b>SYMPTOM</b>	<b>POSSIBLE CAUSE</b>
Low pressure	Plugged or dirty inlet filter; Pump is leaking Pump valve(s) damaged;
No spray	Solution tank is empty; Quick couplings on solution line are not completely connected to machine or tool; Spray tip(s) plugged; Pump motor is not running Plugged/dirty pump inlet filter; Plugged or damaged solution hose or quick disconnect
Pump not running	No power to pump -- no power to cord On/off switch is bad; Pump motor is getting power but won't run – check motor brushes;
Low suction	Recovery tank lid not sealed; Dirty vacuum inlet screen; Vac hose loose or cracked; Vacuum gasket is damaged or compressed
No suction	Recovery tank is full; Vacuum is not running – bad switch or bad vacuum
Low heat	Spraying too long;
No heat	No power to heating element – thermal fuse is blown; the bimetallic switch is not closing or heat on/off switch is bad;

Always use original equipment replacement parts.

Contact your distributor for additional information or to arrange for service.

# Prospector PE220





# Prospector PE220

## Part List

### 120V

Item No.	Part No.	QTY	Description	Item No.	Part No.	QTY	Description
1	41-00536	1	Hose, Drain, With Cap and Chain	17A	32-00002	2	Axle Cap
2	41-00017	1	Hook & Loop Strap, Wand Holder	18	42-00031	1	Heater, Complete
3	39-00021	2	Wheel, 3"	18A	05-30004	1	Repair Kit, Extractor Heater
4	41-09507	1	Ball Float	19	39-00019	2	Caster
5	41-00004	1	Clear Lid w/Mounting Plate	20	41-09510	1	Plate, Gauge Mount
6	01-10595-004	1	Vacuum Tank, Prospector PE220	21	52-00006	2	Wheel, 12"
7	41-00050	1	Hose Barb, for 1-½" Hose	22	41-00700	8	Hose Clamp
8	40-00400	2	Switch, Vacuum motors	23	31-00002	2	Washer, High Temperature
9	01-10597-004	1	Solution Tank, Prospector PE220	24	41-00007	1	Quick Disconnect, Male
10	41-00011	1	Hose Barb/Elbow, 90°	25	39-00004	2	Latch
11	52-00004	1	Lid, Solution Tank	26	05-20002-FP0198	1	Switch Plate
12	41-00526	1	Hose, 3/8" ID X 48", Pump to Heater	27	01-10737-001	1	Base Compartment, Prospector PE220
13	41-00512	1	Hose, ½" ID X 22", Pump Inlet	28	41-00538	1	Hose, Wire Reinforced
14	52-00000	2	Vacuum Motors, 2-Stage	30	40-00800	1	Terminal Block
14A	41-01303	2	Gasket, Vacuum, 5" OD	31	50-00000	1	Pump & Motor, 220 PSI, Diaphragm
15	40-00020	2	Power Cords, 25 ft	32	41-00521	1	Hose, Heater to Outlet QD
15A	40-00016	2	Power Cord, Pigtails	33	40-00401	1	Switch Pump & Heater
16	41-00069	1	Filter, Pump Inlet	34	01-10697-001	2	Manifold, Vacuum
17	41-00060	1	Axle	35	39-00003	2	Strike, For Latch

# Prospector PE220 WARRANTY

**This limited warranty begins on the date of the customers purchase and is valid and available to the original purchaser only.**

## **10-YEAR LIMITED HOUSING WARRANTY**

Manufacture warrants that all rotationally molded housing and tanks will be free from manufacturing defects, defects in workmanship, and defects in material for Ten (10) years from the date of original purchase, for the original purchaser only. This warranty does not apply and is void if there is evidence of improper use, altered, abuse or neglect. **Replacement cost does not include the cost of parts, shipping or labor.**

## **2-YEAR MAJOR COMPONENTS WARRANTY**

Manufacturer warrants that, pumps, heaters and vacuum motors, are covered under a two (2) year limited warranty from the date of original purchase. This warranty does not apply and is void if the pump, vacuum motor, or heater has worn motor brushes, water damage, freezing, chemical build-up, chemical damage, or evidence of abuse, neglect or tampering. **This warranty covers the cost of the replacement parts, shipping of the new part and labor.** Manufacturer will ship parts via normal ground delivery prior to the return of the defective parts at normal charge to the Distributor. Extra charges for expedited or air shipments will be bill to the Distributor. Manufacturer will credit the Distributor for the replacement parts, if the defective parts are returned within 30 days and are determined to be covered under warranty. **This warranty does NOT cover the cost of shipping the damaged parts back to Manufacturer for evaluation.** If a component is replaced, Manufacturer will offer a new 90-day limited warranty on the new component.

## **90-DAY WEAR PARTS LIMITED WARRANTY**

Manufacturer will replace all wear parts for 90 days from the date of original purchase of new equipment. Wear parts are items which wear out as a result of usage or the passage of time and are consumed despite attempts to maintain them, such as gaskets, wheels, brass, cords, wires, electrical terminals, hoses, switches, thermostats, plastisol parts, filters, bearings, brushes, solenoids, O-rings, bulbs, castors, or other parts deemed wear items is manufactures sole discretion. **This warranty covers the cost of replacement parts, Labor and shipping**

**Proof of purchase required**