

# Priority Manufacturing

## **EZ SPOT**

*INFORMATION  
&  
OPERATING  
INSTRUCTIONS*

**READ AND UNDERSTAND THESE INSTRUCTIONS  
BEFORE OPERATING THE MACHINE**

*Manufactured Expressly for*

***Jon-Don***

400 Medinah Road  
Roselle, IL 60172  
800-556-6366 • JONDON.COM

## Contents:

|                               |   |                                 |   |
|-------------------------------|---|---------------------------------|---|
| Machine Specifications        | 1 | Care & Maintenance              | 3 |
| Record Important Information  | 1 | Views of Machine                | 4 |
| Safety Information & Cautions | 2 | Set Up & Operating Instructions | 5 |
| Your New Machine              | 3 | Exploded View & Parts List      | 6 |
| Normal Use                    | 3 | Tools & Hoses Parts List        | 7 |
| Chemicals                     | 3 | Warranty                        | 8 |
| Tools & Accessories           | 3 | Troubleshooting                 | 9 |

## Machine Specifications:

|                        | <b>Jon Don EZ SPOT 120V</b>          |
|------------------------|--------------------------------------|
| Pump                   | 55 psi, oscillating                  |
| Vacuum                 | 2-stage, 85" lift, 88cfm             |
| Solution Tank Capacity | 2.3 Gal                              |
| Recovery Tank Capacity | 2.5 Gal                              |
| Vacuum Shut-off        | Float Control                        |
| Dimensions             | 28-5/16" H<br>11-1/8" W<br>15-1/2" L |
| Weight                 | 22 lbs.                              |
| Warranty               | Limited                              |

## Machine and Purchase Specifications:

**RECORD AND RETAIN THIS IMPORTANT INFORMATION**

EZ SPOT

Serial Number: \_\_\_\_\_

Purchase Date: \_\_\_\_\_

Write the name and phone number of your distributor:

\_\_\_\_\_

\_\_\_\_\_

***And don't forget to register your purchase to activate your warranty***

## CRITICAL SAFETY INFORMATION & CAUTIONS

The acceptable use of this machine is for commercial/professional cleaning, for example, in hotels, schools, hospitals, and offices, rather than for personal housekeeping.

NOTE: Read all instructions before using this machine. Improper use or misuse of the machine can result in personal injury or property damage.



To reduce the risk of personal injury or property damage, follow these procedures:

- Connect to a properly grounded outlet only.
- Do not operate the machine in an explosive environment.
- Do NOT use Solvents.
- Never add water over 120°F/ 49°C to the solution tank.
- Do not pick up anything that is burning or smoking, such as cigarette, matches or hot ashes, or any health endangering dusts. Do not use to pick up flammable or combustible liquids such as gasoline or use in areas where they may be present.
- To avoid electric shock, do not expose to rain or snow and keep from extremes in temperature. Store in a heated location. Use the machine indoors. Do not use outdoors.
- Do not use this machine to dry vacuum before wet cleaning.
- Do not use with damaged cord or plug. If the machine is not working as it should, has been dropped, damaged, left outdoors or flooded with water, return it to a service center.
- Do not leave the machine unattended when it is plugged in. Unplug the unit from the outlet when not in use and before servicing.
- Use only as described in this manual. Use only the manufacturers recommended attachments.
- Do not handle the plug, the cord, or the machine with wet hands.
- Extension cords must be 12/3 and no longer than 50 feet. Replace the cord or plug immediately if the ground prong becomes damaged.
- Do not put any object into opening. Do not use with any opening blocked; keep free of dust, lint, hair, and anything that may reduce air flow.
- Keep loose clothing, hair, fingers and all parts of body away from openings and moving parts.
- Liquid ejected at the spray nozzle could be dangerous as a result of its temperature, pressure, or chemical content.

**READ AND SAVE THESE INSTRUCTIONS**

## YOUR NEW MACHINE:

When you receive your machine, examine the packaging for signs of shipping damage. Carefully unpack the machine and inspect it. If you see evidence of damage to the container or the contents, contact the freight carrier immediately.

Additionally, ensure all parts and accessories are present; if you notice anything missing, contact your distributor without delay.

## NORMAL USE:

The EZ Spot is designed to clean small areas like furniture, area rugs, automobiles, and spots in carpets. These machines are not suited for cleaning the carpet in an entire room.

## CHEMICALS:

The use of clear water in the machine is recommended, within the application of properly diluted cleaner as a pre-spray on the area to be cleaned; however, you may mix water and cleaning chemicals in a bucket -- according to directions on the chemical label -- and then pour into the solution tank. If you chose to use chemicals in the machine, always use a cleaner with a pH as close to neutral as possible to avoid premature wear of the pump, seals, and/or other components. Damage caused by the use of strong chemicals is not covered by the warranty.

The use of powder chemicals is discouraged; unless they are mixed very thoroughly and rinsed out completely at the end of the job, powdered cleaners could cause a build-up in the pump, lines, heater and/or quick disconnect. Any problem caused by a chemical build-up is not covered by warranty.

If foaming occurs as you clean, use a defoamer, either in the recovery tank or on the area being cleaned, to prevent overflow which can cause water damage to machine components.

## TOOLS & ACCESSORIES:

Use only manufacturer's recommended tools and accessories. Our custom hand tool is rotational molded and will provide years of trouble-free use. If the spray valve on your cleaning tool begins to leak or if the spray tips get worn and are no longer providing a nice even spray pattern, order replacements.

The solution line and vacuum hose are made of durable and long-lasting components and, with proper care, they both should last for years. Use a spray silicone to keep the quick connect couplings moving freely.

## CARE AND MAINTENANCE:

For continual peak operation, clean the internal plumbing by rinsing with clear water at the end of each job. About once a month, rinse the machine with a commercial flushing compound to break-up any mineral or chemical accumulation that may have formed from the use of hard water or chemicals.

The vacuum motor and the pump do not require any scheduled maintenance; however, the vacuum motor may require replacement brushes after 700-1000 hours.

To help maintain a professional image; clean the exterior of the machine with an all purpose detergent, and protect it with automobile interior polish. Lubricate the wheels, castors, and quick disconnects with an all purpose, silicone spray.

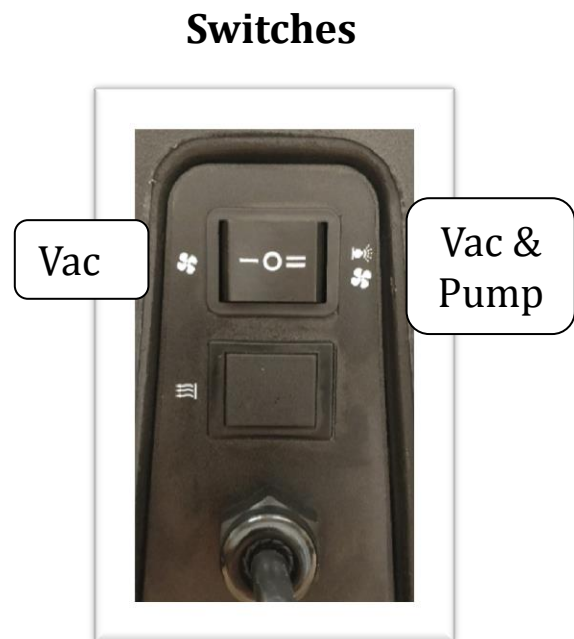
# VIEWS OF MACHINE



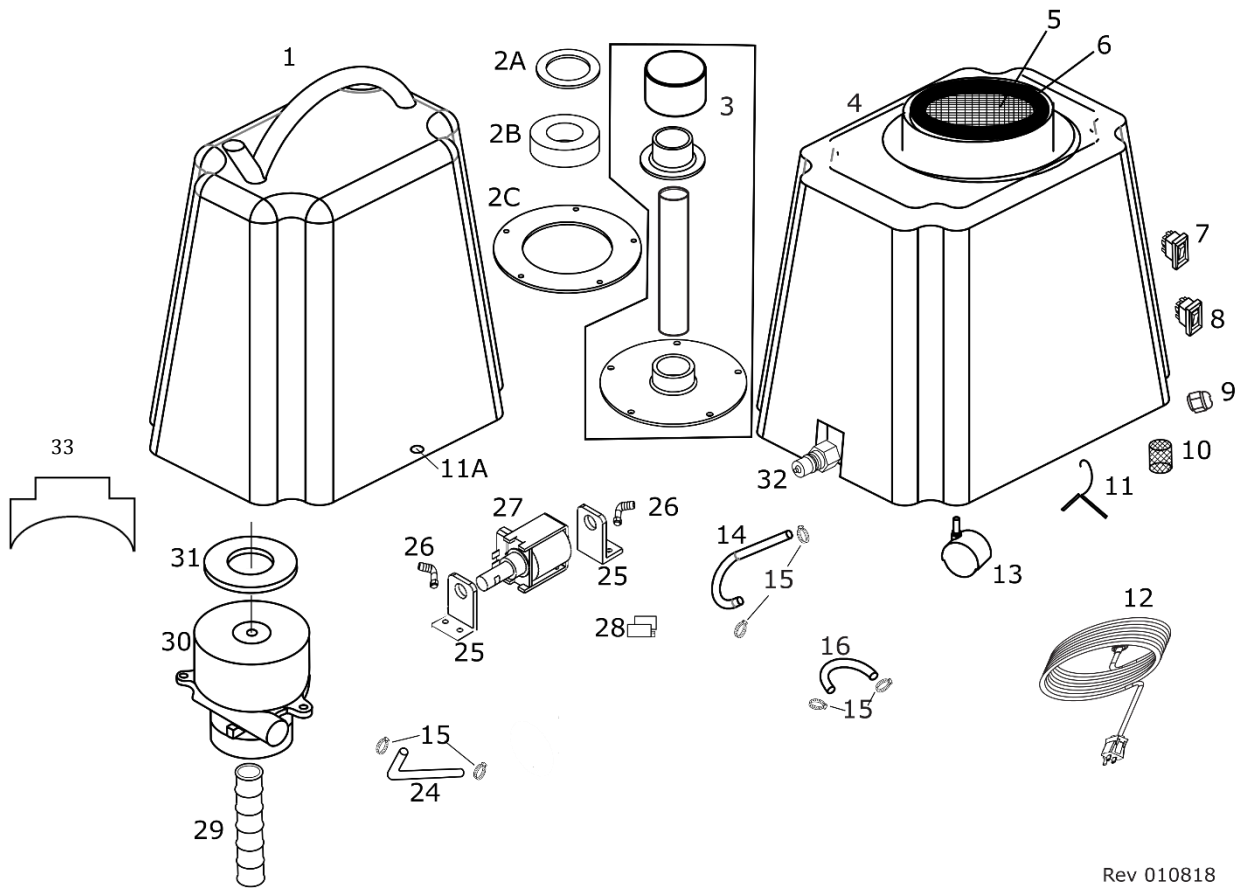
Figure 1

## SET-UP AND OPERATING INSTRUCTIONS:

1. Before each use, inspect the machine, hoses, and cleaning tool for cleanliness and completeness, Ensure the spray nozzles on the cleaning tool are tight.
2. Release the two latches, grasp the handle on top of the recovery tank, and pull the recovery tank up (figure 1) and off the solution tank. Set the recovery tank aside.
3. Fill the solution tank with up to 2 gallons of clean, warm water.  
Never use water above 120°F or 49°C in the solution tank.  
CAUTION: Do NOT use solvents.
4. Replace the recovery tank back onto the solution tank and secure both latches.
5. Connect the solution hose to the quick coupling on the machine and connect the other end of the solution hose to your cleaning tool. Push the vacuum hose onto the vacuum inlet port on the machine's recovery tank and the other end onto the tool.
6. Plug the power cord into a properly grounded outlet.
7. Turn on the pump (figure 2, set the switch to the right to turn on both the pump and the vacuum and to the left to turn on only the vacuum. Middle position is off) and spray through your cleaning tool for a few seconds to fill the lines with water, then turn the switch off.
8. Pre-spray the area to be cleaned with a high quality, non-foaming cleaner mixed to product specifications. NOTE: If foaming occurs, use a defoaming agent to prevent damage to electrical components. Water damage is not covered by the warranty.
9. Turn on both the pump and vacuum (figure 2)
10. Begin cleaning. NOTE: the machine has a suction shut-off float in the recovery tank to prevent over flow. If the suction stops, turn off the machine, remove and empty the recovery tank.
11. When the job is finished, empty the recovery tank and rinse it clean. Remove any remaining liquid from the solution tank.

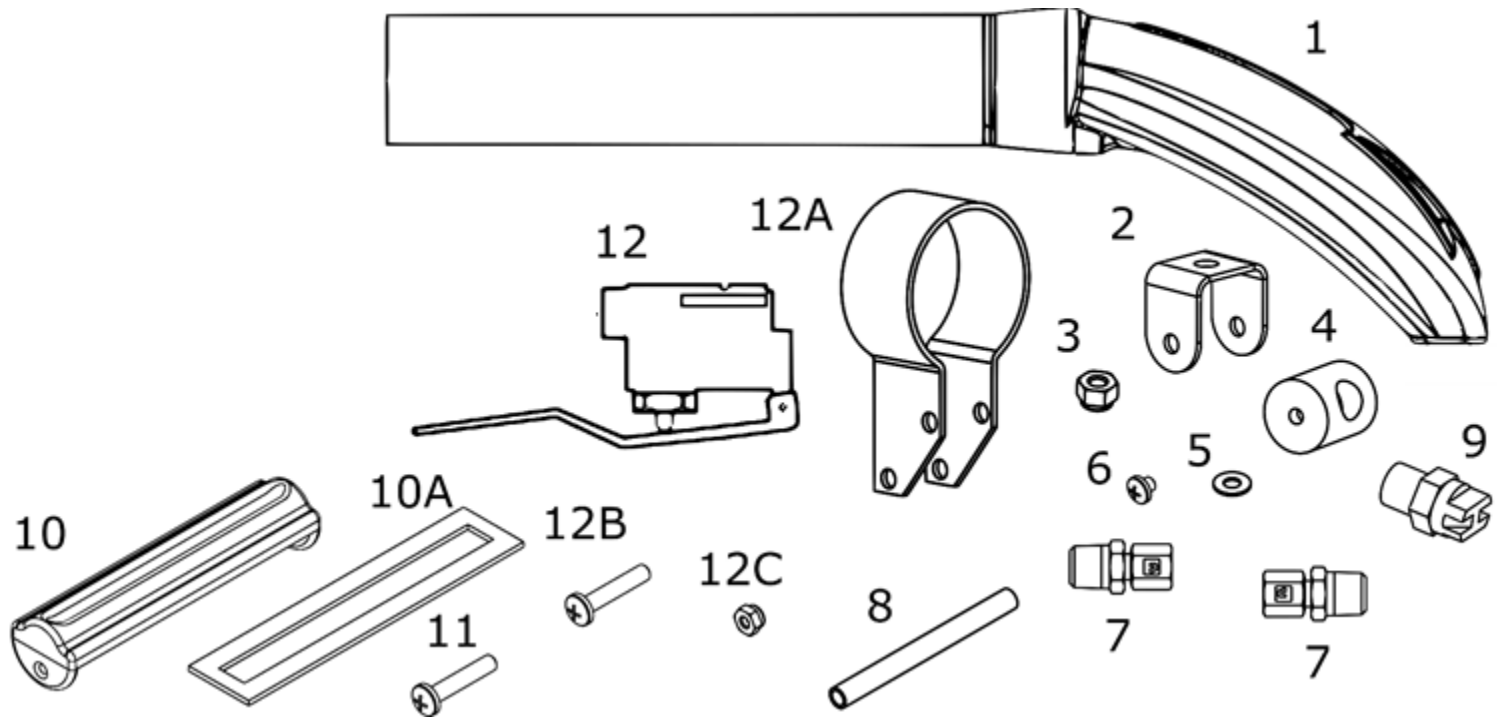


**Figure 2**



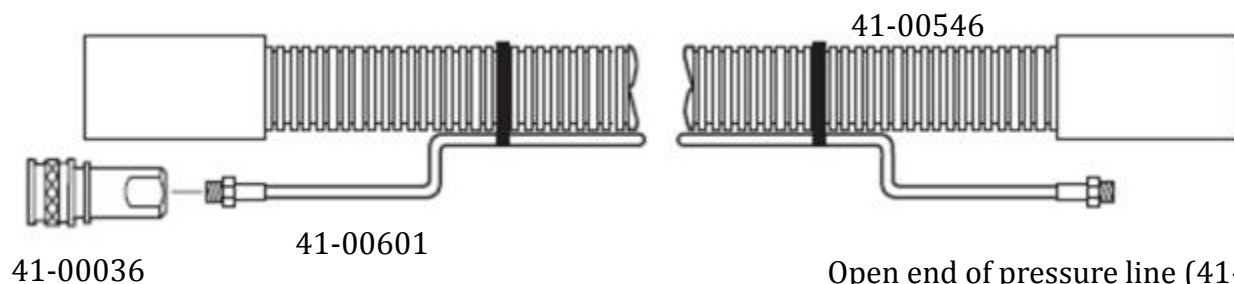
Rev 010818

| Item No. | Part No. | QTY | Description                    | Item No. | Part No. | QTY | Description            |
|----------|----------|-----|--------------------------------|----------|----------|-----|------------------------|
| 1        | 05-30001 | 1   | Tank, Recovery, Spotter Repair | 14       | 41-00525 | 1   | Hose, 9"               |
| 2A       | 41-01309 | 1   | Gasket, Top Float              | 15       | 41-00700 | 5   | Hose Clamp, 3/4"       |
| 2B       | 41-01308 | 1   | Gasket, Bottom Float           | 16       | 41-00526 | 1   | Hose, Measure for Size |
| 2C       | 41-01307 | 1   | Gasket, Float to Tank          | 24       | 41-00526 | 1   | Hose, Measure for Size |
| 3        | 05-30002 | 1   | Float Assembly, Repair         | 25       | 35-00002 | 2   | Bracket, Pump Mounting |
| 4        | 05-30003 | 1   | Tank, Solution, Spotter Repair | 26       | 41-00074 | 2   | Hose Barb, Nylon Elbow |
| 5        | 41-00035 | 1   | Screen, Vac Inlet, 5"          | 27       | 50-00007 | 1   | Pump, 55 PSI           |
| 6        | 41-01305 | 1   | Gasket                         | 29       | 35-00186 | 1   | Foam and Wire Muffler  |
| 7        | 40-00401 | 1   | Switch, Rocker, Vacuum & Pump  | 30       | 52-00000 | 1   | Vac Motor, 120V        |
| 8        | 40-00400 | 1   | Switch, Heat                   | 30A      | 05-30000 | 1   | Vac Motor Repair       |
| 9        | 41-00016 | 1   | Cord Retainer, For Power Cord  | 31       | 41-01303 | 1   | Gasket, Vac Motor      |
| 10       | 41-00068 | 1   | Filter, Pump Inlet             | 32       | 41-00007 | 1   | Quick Disconnect, Male |
| 11       | 39-00020 | 2   | Latch                          | 33       | 41-01306 | 1   | Batwing Gasket         |
| 11A      | 41-09502 | 2   | Catch for Latch                | 34       | 05-30006 | 1   | Pump Repair Kit        |
| 12       | 40-00000 | 1   | Power Cord, 25 ft.             | 35       | 05-30007 | 1   | Switch Plate Complete  |
| 13       | 52-00007 | 4   | Caster                         |          |          |     |                        |



| Item No. | Part No.     | QTY | Description                    | Item No. | Part No. | QTY | Description                  |
|----------|--------------|-----|--------------------------------|----------|----------|-----|------------------------------|
| 1        | 05-10022-002 | 1   | Smak UPH Wand w/ 10ft Hose Set | 9        | 43-00026 | 1   | Spray Tip                    |
| 2        | 35-00007     | 1   | Bracket, Spray Manifold        | 10       | 39-00030 | 1   | 4" Glide                     |
| 3        | 32-00006     | 1   | Nut, Spray Manifold Bracket    | 10A      | 41-01321 | 1   | Gasket, Glide                |
| 4        | 43-00020     | 1   | Spray Manifold                 | 11       | 90-00313 | 2   | Screw, Glide Mounting        |
| 5        | 90-00235     | 2   | Washer, Spray Manifold         | 12       | 41-01810 | 1   | Detail Valve                 |
| 6        | 34-00043     | 2   | Screw, Spray Manifold          | 12A      | 35-00013 | 1   | Bracket, Detail Valve        |
| 7        | 41-00138     | 2   | Brass Compression Fitting      | 12B      | 34-00051 | 2   | Screw, Detail Valve Mounting |
| 8        | 41-00552     | 1   | Copper Tube                    | 12C      | 32-00027 | 2   | Nut, Detail Valve Mounting   |

## Detail Tool Hoses



Open end of pressure line (41-00601) attaches to the detail valve (41-01810)



# EZ SPOT WARRANTY

**This limited warranty begins on the date of the customers purchase and is valid and available to the original purchaser only.**

## **10-YEAR LIMITED HOUSING WARRANTY**

Manufacture warrants that all rotationally molded housing and tanks will be free from manufacturing defects, defects in workmanship, and defects in material for Ten (10) years from the date of original purchase, for the original purchaser only. This warranty does not apply and is void if there is evidence of improper use, altered, abuse or neglect. **Replacement cost does not include the cost of parts, shipping or labor.**

## **2-YEAR MAJOR COMPONENTS WARRANTY**

Manufacturer warrants that, pumps, heaters and vacuum motors, are covered under a two (2) year limited warranty from the date of original purchase. This warranty does not apply and is void if the pump, vacuum motor, or heater has worn motor brushes, water damage, freezing, chemical build-up, chemical damage, or evidence of abuse, neglect or tampering. **This warranty covers the cost of the replacement parts, shipping of the new part and labor.** Manufacturer will ship parts via normal ground delivery prior to the return of the defective parts at normal charge to the Distributor. Extra charges for expedited or air shipments will be bill to the Distributor. Manufacturer will credit the Distributor for the replacement parts, if the defective parts are returned within 30 days and are determined to be covered under warranty. **This warranty does NOT cover the cost of shipping the damaged parts back to Manufacturer for evaluation.** If a component is replaced, Manufacturer will offer a new 90-day limited warranty on the new component.

## **90-DAY WEAR PARTS LIMITED WARRANTY**

Manufacturer will replace all wear parts for 90 days from the date of original purchase of new equipment. Wear parts are items which wear out as a result of usage or the passage of time and are consumed despite attempts to maintain them, such as gaskets, wheels, brass, cords, wires, electrical terminals, hoses, switches, thermostats, plastisol parts, filters, bearings, brushes, solenoids, O-rings, bulbs, castors, or other parts deemed wear items is manufactures sole discretion. **This warranty covers the cost of replacement parts, Labor and shipping**

**Proof of purchase required**

## TROUBLESHOOTING



**ALWAYS UNPLUG THE MACHINE BEFORE  
DISCONNECTING OR CONNECTING ANY WIRES OR  
COMPONENTS**

| <b>SYMPTOM</b>   | <b>POSSIBLE CAUSE</b>  |
|------------------|--|
| No spray         | Solution tank is empty;<br>Solution hose is not completely connected to machine & tool;<br>Spray tip on tool is plugged;<br>Pump is not running;<br>Pump inlet filter is dirty or plugged;                       |
| Pump not running | No power to pump; <ul style="list-style-type: none"><li>• Check outlet for power;</li><li>• Power to cord or switch is bad;</li></ul>  |
| Low suction      | Recovery tank not sealed;<br>Damaged vacuum gasket;<br>Dirty vacuum inlet screen;<br>Recovery hose loose or cracked;   |
| No suction       | Recovery tank is full;<br>Vacuum motor is not running ; <ul style="list-style-type: none"><li>• Check outlet for power;</li><li>• Power cord is bad;</li><li>• Bad switch;</li><li>• Bad vacuum motor;</li></ul> |

Always use original equipment replacement parts.

Contact your distributor for additional information or to arrange for service.