

EM360™ Electrostatic Sprayer Quick Start Guide

Thank you for choosing the EMist EM360™ Electrostatic Sprayer. We have created an easy to use system that combines advanced liquid application technologies with improved mobility. The result is superior application and enhanced disinfection, as well as a convenient convertible design for users.

CONTENTS: After unpacking, inspect the components for any damage or missing hardware pieces, etc. The following components are included with your purchase:

- 1) Power Pack with Applicator
- 2) One Gallon Liquid Tank
- 3) Rechargeable Battery
- 4) Battery Charger (220v optional)
- 5) Backpack Harness with Holster (Optional)
- 6) Grounding Strap for Harness
- 7) Pull Cart with Holster (Optional)



Step 1: Install the Battery

- Make sure the battery is fully charged. (5 bars = full charge)
- With the power pack battery slots facing you, remove the battery covers by pinching the triangle.
- Install the battery with the tab facing left.
- Gently push the battery to seat it.
- Replace the battery cover.

Step 2: Liquid Tank Insertion

- For the initial set up/test, fill the liquid tank 1/3 full with water.
- Gently place the liquid tank in the power pack.
- Slightly rotate clockwise about 1/4 turn while depressing the tank until you feel resistance. The tank's handle should line up with placard on the power pack.

Step 3: Grounding Strap Installation

- Identify the white or brown portion of the grounding strap ring and install it by placing the white or brown portion on the ball of the shoe.
- Place the elastic strap around your heel.
- Snap the button to the bottom of the power pack.

Step 4: Power Pack Harness Strap Adjustments (Optional)

- Put the harness on the power pack.
- Put the power pack on like you would a backpack and adjust the straps to fit comfortably.

Step 5: Pull Cart Installation (Optional)

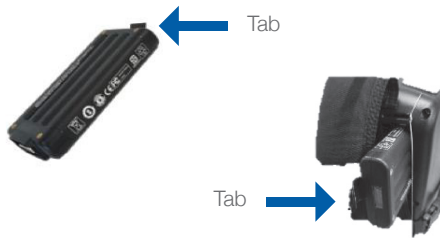
- Raise adjustable clamp, loosening the two knobs and positioning as desired then re-tightening the knobs.
- Put the clamp over the hand grip of the power pack keeping the electro-fluid cable out of the way. This secures the pack in place.
- Use the applicator holster when system is not in use.

Step 6: Applicator Function Check

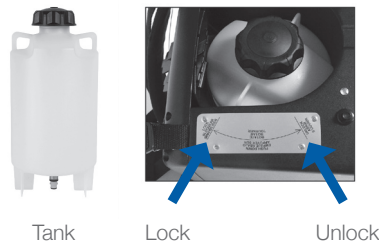
- Push/flip the toggle power switch down and the green LED light will turn on.
- Once the applicator trigger switch is depressed, the fan will turn on first, followed by the liquid spray.
- The yellow LED light signifies that the high voltage power supply is charging the liquid droplets.
- Once the applicator trigger is released, the liquid will stop, and the fan will turn off after a slight hesitation to ensure the liquid is cleared inside the applicator.
- To turn the system off push/flip the toggle power switch up. This will completely turn off the system.

- While using as a backpack, **the grounding strap must be worn by the user.** If the grounding strap is not utilized the system can shut down and not operate correctly.
- Optimal distance from a target is 3-5 feet.
- Applicator will shut off once the power indicator on the battery reaches 1-2 bars.

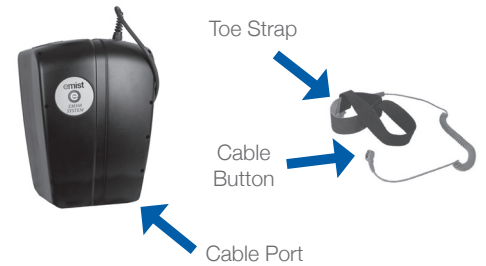
Backpack Unit Instructions



Step 1: Keep the tab to left when inserting the battery into the power pack.



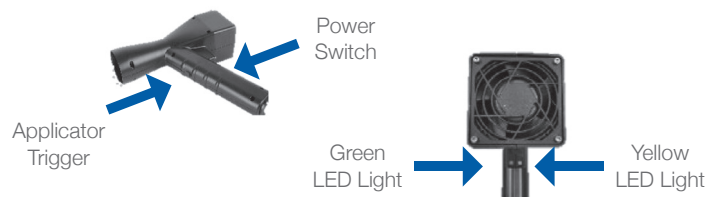
Step 2: Slightly rotate clockwise about 1/4 turn while depressing the tank. The tank's handle should line up with placard.



Step 3: The cable button snaps to the bottom of the power pack housing. Slide the toe strap onto the toe of your shoe with the white or brown area touching the ball of your shoe.

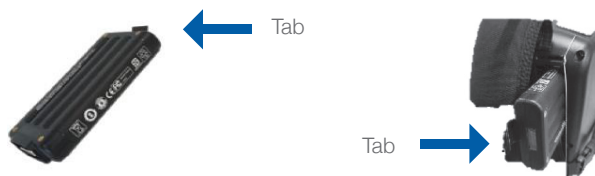


Step 4: Put the harness on the power pack. Put the power pack on like you would a backpack and adjust the straps to fit comfortably.

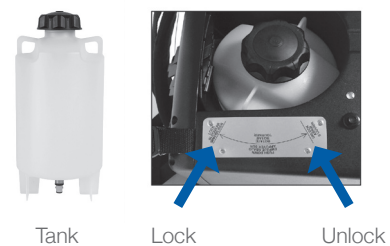


Step 5: Depress the applicator power switch until green LED light displays. Depress the applicator trigger switch. The yellow LED light signifies the high voltage power supply is charging the liquid.

Pull Cart Unit Instructions



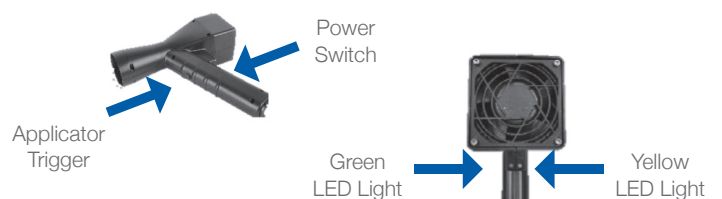
Step 1: Keep the tab to left when inserting the battery into the power pack.



Step 2: Slightly rotate clockwise about 1/4 turn while depressing the tank. The tank's handle should line up with placard.



Step 3: Raise the adjustable clamp and place the power pack with battery slots facing the handle onto the pull cart. Lower the clamp onto the power pack and tighten.



Step 5: Depress the applicator power switch until green LED light displays. Depress the applicator trigger switch. The yellow LED light signifies the high voltage power supply is charging the liquid.