



OPERATING INSTRUCTIONS

Dust Extractor

T8600 Propane

Introduction

Dear Customer.

Thank you for choosing Pullman Ermator as your supplier.

We hope that the Pullman Ermator dust extractor will be to your satisfaction and meet your expectations.

Pullman Ermator
a genuine technician
supply the market

**READ ALL INSTRUCTIONS
BEFORE USE**

ers acquired
continue to

Notice!

These instructions are only for the dust extractor T8600 PROPANE.

The dust extractor T8600 PROPANE can only be used with dry, non-explosive material.

Pullman Ermator will not be held responsible if the air cleaner is used for other applications or has been used in ways other than those outlined in this instruction manual.

Before using the machine, please read the safety regulations carefully.

Read the complete instruction manual before using the dust extractor.

All spare part used for the dust extractor T8600 PROPANE must be those specified by Pullman Ermator.

Unpacking

When unpacking the machine, please check for damage and that the following accessories are included:

- The hose with end fittings
- Steel tube
- Floor nozzle

If any of above-mentioned parts are missing, please contact your local distributor or our sales representative.

Safety Instructions

Handling

Warning

- Outdoor use or in well ventilated areas only.

Warning

- Make sure the assembly area is firm, so the dust extractor does not tip over. Risk of personal and material injury.

Warning

- Risk of pinching when handling the toggle fastener.

Warning

- The machine must not be used in environments where explosive gases may be present. Serious risk of explosion.

Transportation

Caution

- During transportation, battery and propane tank must be securely fastened and completely disconnected at all times.

Caution

- Before operating the vac after transportation, propane tank and battery must be re-connected and correctly assembled.
 1. Battery: Make sure that the wires are firmly connected to the correct terminals (black (-) & Red (+). Also confirm that the bracket that holds the battery in place is correctly assembled, so that the battery can't move during operation.
 2. Propane tank: Make sure that the tank is firmly held in place by the ex-centric locks and holder plate where the propane tank sits on the back of the vac. It should not be able to move when correctly assembled.

Service WARNING

Before cleaning and servicing the machine, you must turn the machine off and disconnect battery and propane tank

ATTENTION!

Wait until fan impeller has completely stopped before starting servicing the machine.

The exhaust will get very hot after running the engine for just a short time

- Avoid cleaning with a high pressure cleaner. If necessary, do not direct at the openings on the machine, especially the opening for the cooling air.
- Before moving the machine from the working area, the machine must be cleaned. Furthermore, the inlet must be locked using the inlet valve.
- All other equipment must be considered to be contaminated and be treated thereafter.
- If possible, use a special suitable room.
- Proper personnel protective equipment must be used.
- After a service, all parts that are contaminated must be taken care of properly in plastic bags, according to all regulations.
- If the vacuum cleaner has to be used for other purposes, it is extremely important that the vacuum cleaner is cleaned to avoid the spread of hazardous dust.
- Correct distance between clutch plates = 0,5 mm (-0,2 + 0,3)

Warning

- Dust can be spread when the coarse filter and the absolute filter are replaced that can be dangerous to health. Accordingly, the user should wear protective glasses, protective gloves, and a breathing mask conforming to protection class FFP3.

Warning

- Do not puncture the absolute filter. Risk of dust dispersion.

OPERATION	INTERVAL							
	Daily	First 8 Hrs.	Every 50 Hrs.	Every 100 Hrs.	Every 200 Hrs.	Every 300 Hrs.	Every 400 Hrs.	Every 500 Hrs.
Check & add engine oil	O							
Check for loose or lost fasteners	O							
Check for oil leakage	O							
Inspect fuel hose and connections	O							
Clean Engine dust filter	O							
Inspect Throttle & Wire	O							
Change Engine Oil		O	O					
Change engine oil filter		O		O				
Check & clean primary air filter				O				
Check secondary air filter				O				
Inspect battery and battery connections				O				
Replace Engine primary air filter						O		
Replace Engine Pre filter								O
Inspect, clean & re-gap spark plugs, Replace if necessary				O				
Check & adjust valve clearance * Re-torque heads *						O		
Clean & lap valve seating surface *						O		
Check engine emissions								O
Inspect Magnetic clutch			O					
Adjust using shims or Replace Magnetic clutch	As Required							
* Contact a Certified Technician,								

For general service information see the separate engine manual

Function

The machine is used for sucking and separating dry, non-combustible dust with an explosion limit value of $\bullet 0.1\text{mg}/\text{m}^3$.

The engine is started by the key switch. When the engine has warmed up and is running at idle, the clutch is engaged by a second switch. Dust laden air is then sucked through the inlet valve at high speed via the suction hose. The air is slowed down by the cyclone and coarse dust particles are separated out, partly by centrifugal force and partly by gravity. Air and finer particles then pass through the tube filter where separation takes place. The machine is designed for filter cleaning by reverse air pulse.

The separated dust accumulates in the cyclone until the machine is switched off, when it drops through the bottom flap into the plastic bag.

Warning

Before starting the machine, check that the inlet valve is open. And that the clutch is disengaged

Use

Before use, the user must be trained in the handling of the dust extractor and the hazardous dust.

du

Warning

Before starting the engine, check the service table for daily maintenance

IF following procedure is not followed, clutch will break

1. **SECURE** that clutch switch is in off position
2. Start motor and run on **LOWEST** RPM
3. Engage clutch



NEVER engage clutch while running the engine at high RPM's

The filter must be cleaned from time to time. This must be done before changing the plastic bag. It can also be done when the work is complete or when there is poor suction.

Procedure: While running the machine, seal the inlet using the inlet valve. Let the machine build up vacuum for a few seconds (approx. 5 sec.) then quickly push down on the top handle and release it slowly. Repeat this procedure 5 times. If suction remains poor, the filter should be replaced. The plastic bag may only be replaced after cleaning the filter.

The plastic bag must be tied up after removal. Only use original parts.

Filter change

Risk of dust dispersion - Use of personal safety equipment

Unhealthy dust can be spread during filter change. Accordingly, the user should wear protective glasses, protective gloves, and a breathing mask conforming to protection class FFP3.

WARNING:

Turn off the engine and wait for the fan to completely stop before opening the machine to change filters.

The exhaust will get very hot after running the engine for just a short time

Main filter

Loosen the two latches between the tank and the lower cyclone. Loosen the two latches at the hose connection between the tank and the absolute filter cover. Rotate the tank forwards. Rotate the filter plate counter clockwise 10 degrees and carefully turn filter and holder upside down. Place a plastic bag over the filter unit. Lift the filter carefully and pinch up the bag by hand and then tie the bag up. This bag must be properly disposed of.

Insert a new complete filter pack in reverse order. Only original filters may be used.

HEPA filter

Loosen the three latches holding the filter cover and carefully lift the filter up and into a plastic bag. This bag must be properly disposed of. Insert new filters in reverse order.

Accessories

Part.no.		Description	No./machine
200600596	Complete filter set	1 ea	
200600595	MF5500 HEPA filter	2 ea	
1376013	Longopac (4-pcs).	1 ea	

For other spare parts, see the enclosed spare parts list.

Warranty

All Pullman Ermator devices and accessories have a 12-month factory warranty for material and manufacturing defects. The warranty extends to 36 months when returning the attached warranty slip. Do not attempt to repair the suction apparatus without the consent of the manufacturer.

The warranty does not cover defects which are the result of normal wear and tear, negligence, defective use, unauthorised repair or the suction apparatus being connected to the incorrect voltage.

In the event of any complaint, the suction apparatus or an agreed part of it must be returned to us or our authorised representative for warranty examination and for any warranty repair or replacement.

Problem solving

The dust extractor T8600 PROPANE are designed and manufactured for severe environments and tasks, but the user must note that the machine components must be protected from knocks and blows. Filter and sealing connections are carefully chosen for the environment of the operator. Therefore, the machine must be handled with care if it is to work correctly for many years.

Problem	Cause	Procedure
Engine does not start	No gas	replace gas tank, check fuel hose & regulator
	No spark	Check engine service manual
	No battery power	Charge battery, replace if necessary
	Switch defective	Replace
	Low oil sensor	Check oil level and refill if necessary
Fan impeller not engaging	Emissions sensor	Ventilate area and wait until red light on sensor is off
	Worn/broken clutch	Check wear, adjust or replace if necessary
Engine and fan runs but there is no suction	Hose not connected	Connect the hose
	Hose blocked	Clean the hose
	No plastic bag	Install plastic bag
Engine and fan runs but suction is poor	Damage to the hose	Change hose
	Blocked filter	Change filter
	Top cover loose	Adjust
	Dirt in the flap	Clean the flap. <i>Use protective equipment</i>
	Sealing defective	Change current seal
Dust blows from motor	Defective or loose filter	Adjust or change
Abnormal noise		Order service

SAVE THESE INSTRUCTIONS!

TECHNICAL DATA

T8600 Propane

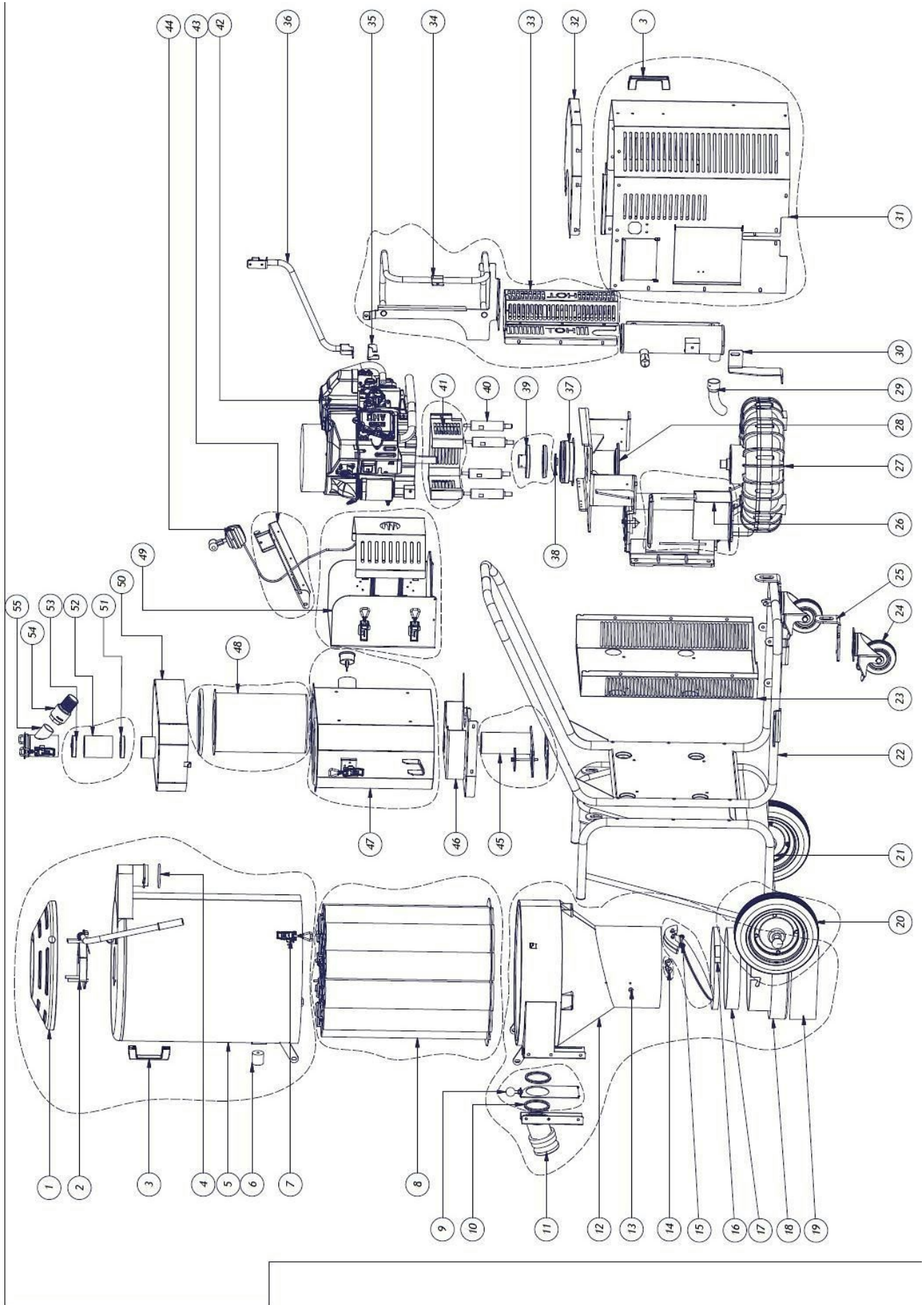
VOLTAGE (battery)		12 VDC	
ENGINE POWER		18 HP	
ENGINE BRAND		Kawasaki	
MAX AIR FLOW	(CFM)	410	
	(m ³ /h)	700	
MAX VACUUM	(H ₂ O Inch)	115"	
	(Kpa)	-28	
PRIMARY HOSE		33 feet x \varnothing 3"	
	10 M x \varnothing 76 mm		
INLET		\varnothing 3"	\varnothing 76
mm			
FINE FILTER (sock filter)		•99.5%	
		Filter area 2,3 m ² (25 ft ²)	
HEPA FILTER (2 x cartridge filter)		HEPA H13	
		Filter area 5 m ² (54 ft ²)	
SOUND LEVEL		74 dB(A)	
DUST COLLECTION SYSTEM		Longopac length 22 m	
DIMENSION LxWxH		140x70x177,5 (cm)	55x27x69 (inches)
WEIGHT		285 kg (628 lbs)	

MANUFACTURER AND MODEL INFORMATION

**Pullman Pullman Ermator AB
Industrivägen 10
S-777 34 SMEDJEBACKEN
Sweden**

T8600 Propane Nr./No: 0600403h0001-xxxx

Manufact.year: 2013-

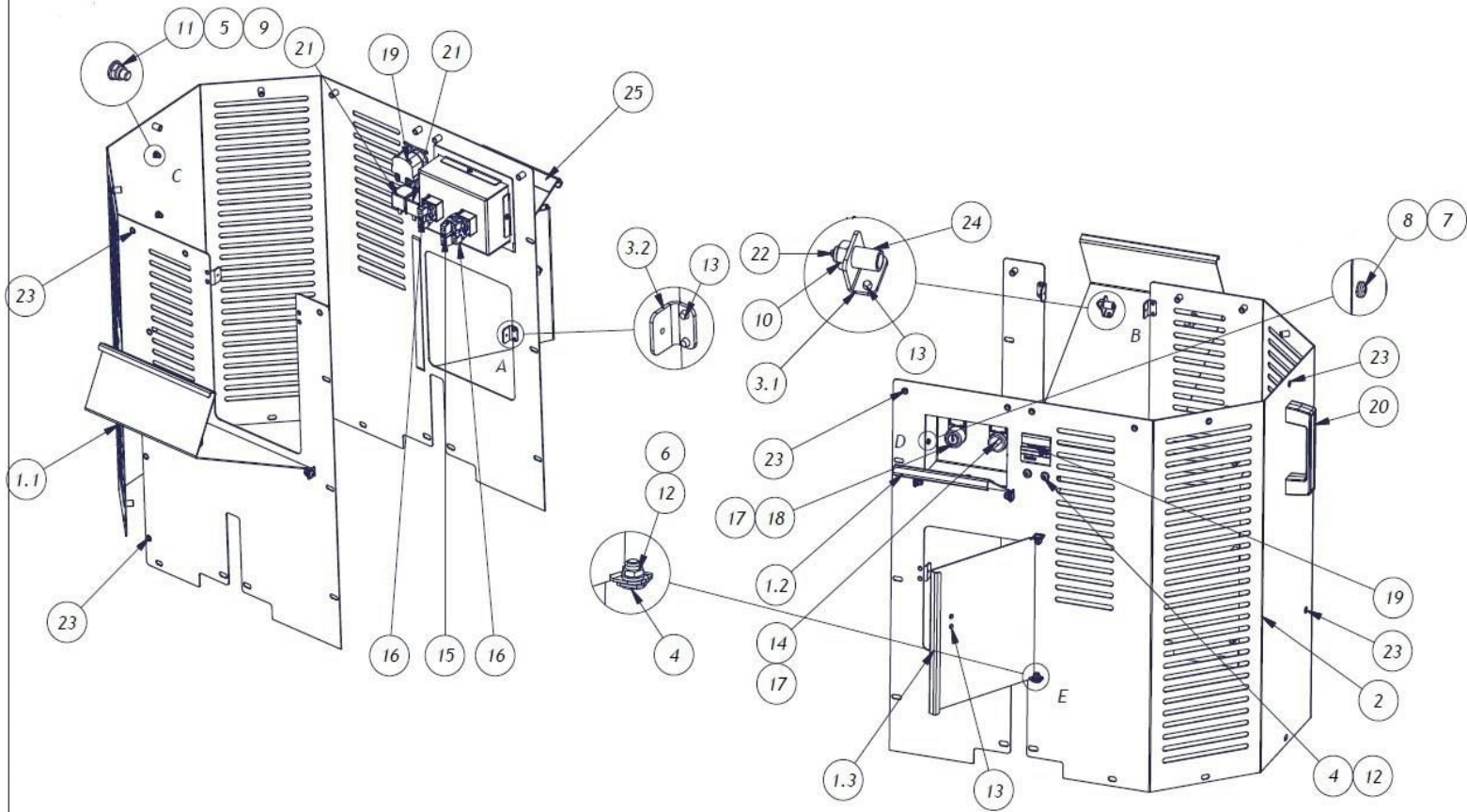


Spare parts list T8600 PROPANE

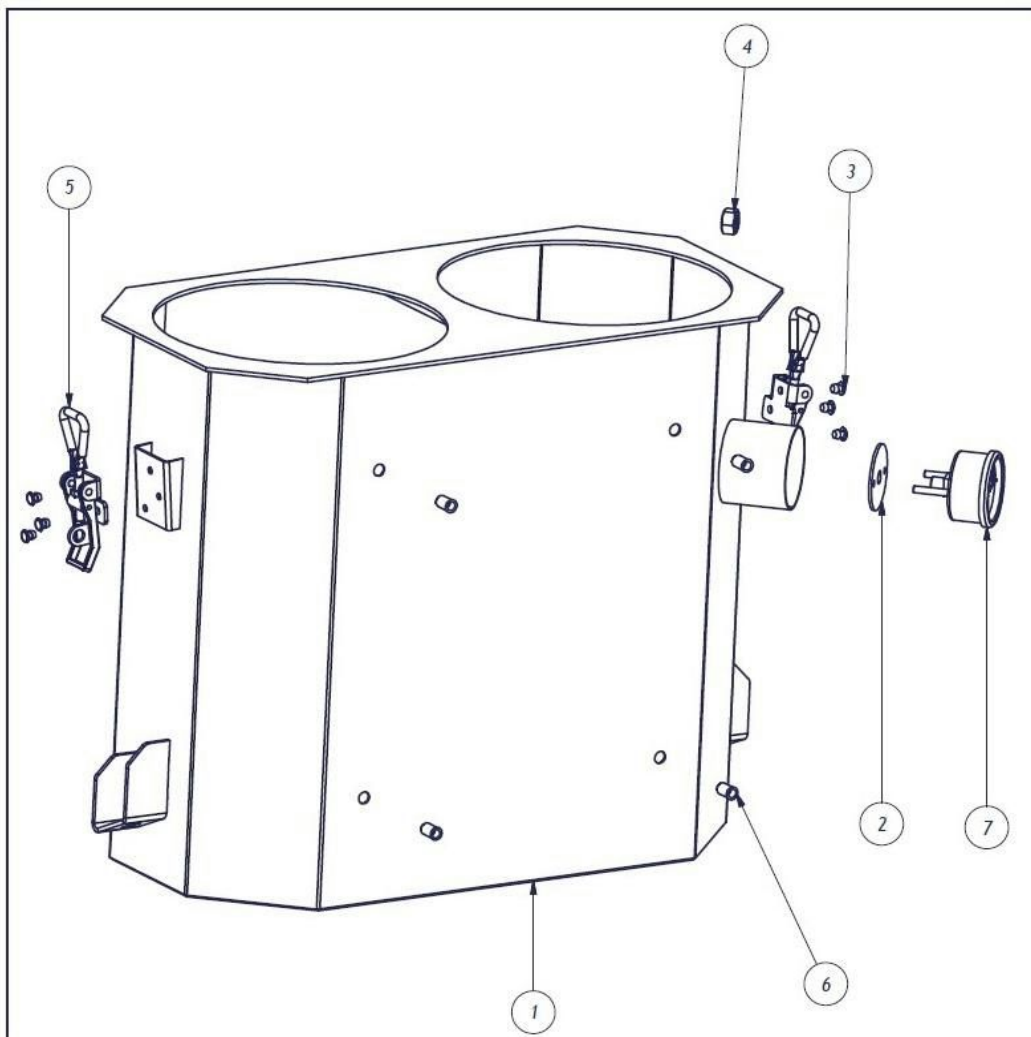
Pos	Antal/ Qty	T8600	Benämning / Description
1	1	200600656	Top cover
2	1	200600655	Filter cleaning unit
3	1	200600658	Handle
4	1	1351239	O-ring
5	1	200600657	Tank kit
6	1	N/A	Contact vendor
7	5	200600606	Ex-centric lock
8	1	200600596	Pre-filter, including tensioner
9	1	200600652	Valve incl. Gaskets
10	1	201400559	Valve gasket kit
11	1	201000028	Inlet 3" camlock
12	1	200600620	Lower tank complete
13	1	200800326	Nut for longpac holder on lower tank
14	1	25007	Holder flap
15	1	200600621	Flap complete
16	1	1371001	Belt
17	1	1351162	Anti skid
18	1	200600536a	Longopac holder
19	1	1376013	Longopac
20	2	201200062	Front wheel kit (1 wheel + cap)
21	1	200600720	Wagon front
22	1	N/A	Contact vendor
23	1	N/A	Contact vendor
24	2	25320	Wheel
25	1	N/A	Contact vendor
26	1	N/A	Contact vendor
27	1	N/A	Contact vendor
28	1	N/A	Contact vendor
29	1	N/A	Contact vendor
30	1	N/A	Contact vendor
31	1	N/A	Contact vendor
32	1	N/A	Contact vendor
33	1	N/A	Contact vendor
34	1	N/A	Contact vendor
35	1	N/A	Contact vendor
36	1	N/A	Contact vendor
37	1	201400512	Clutch
38	1	201400575	Lower clutch assembly hardware kit
39	1	201400577	Upper clutch assembly (separate exploded view below)
40	1	N/A	Contact vendor
41	1	N/A	Contact vendor
42	1	201200006	Kawasaki Engine kit
43	1	N/A	Contact vendor
44	1	201400511	Throttle kit

Spare parts list T8600 PROPANE (continued)

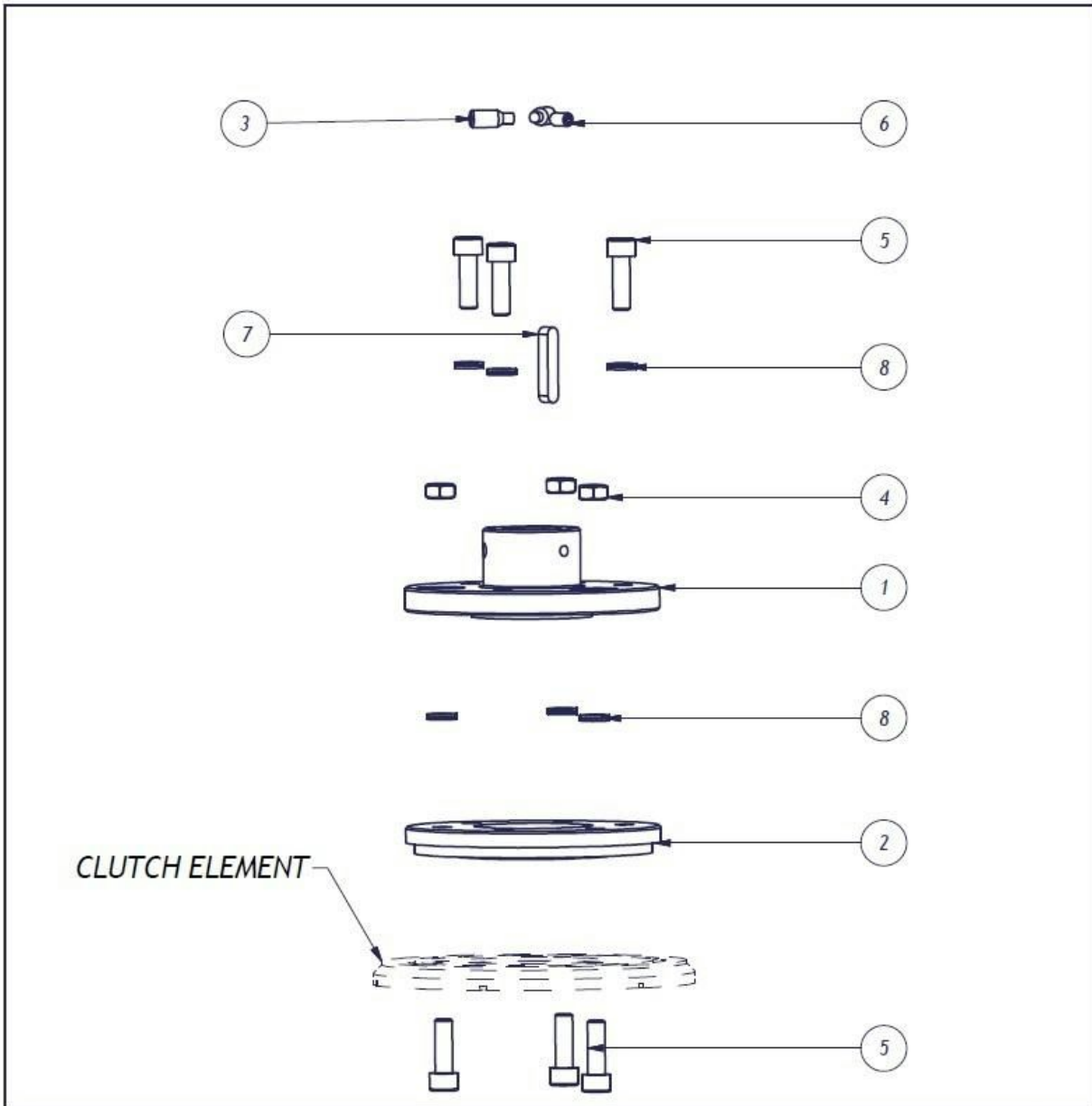
Motor cover



Hepa filter box



Upper clutch holder



Notes
