

PE500 EXTRACTOR WITH HEAT

By Jon-Don, Inc.

Please fill out the following information:

Model No: _____

Serial No: _____

Distributor Name: _____

Distributor Phone No: _____

Date of Purchase: _____



Jon-Don

400 Medinah Road, Roselle, IL 60172
Phone: 800-556-6366 | Fax: 888-344-6878
www.jondon.com

SAFETY, OPERATION AND MAINTENANCE MANUAL WITH PARTS LIST

Please read before use!

500 PSI

REGISTER
YOUR
MACHINE
ONLINE!



Model No. PE500

Jon-Don

IMPORTANT INFORMATION AND SAFETY INSTRUCTIONS

Register your Machine at www.jondon.com
Serial No: _____

PROSPECTOR PE500 EXTRACTOR WITH HEAT

- Reliable Power
- Innovative Design
- Safe & Easy to Use
- Powerful Extracting
- Easy Transport
- Patented Features

Dear Valued Customer,

Congratulations on the purchase of your 12-Gallon Carpet Extractor with Heat! The world of carpet cleaning is becoming more high-tech and competitive and we strive to provide you with the most innovative products. Our Carpet Extractor is yet another example of this, bringing a new dimension to carpet and upholstery cleaning with its cutting-edge features, quality and value.

Please review this manual, paying careful attention to the Safety Instructions section. Keep in mind that any unnecessary damage, neglect or abuse of this machine will void your warranty. You can be confident that simple maintenance will ensure that your Carpet Extractor provides quality performance for many years to come.

If warranty questions arise, please consult your manual or contact your distributor. Should you have any questions regarding maintenance, replacing parts or ordering parts, please call an authorized distributor.

Before you begin using your carpet extractor, please thoroughly review this Owner's Manual.

Again, congratulations on the purchase of your 12-Gallon Carpet Extractor with Heat!

9.0 Machine Parts List Continued

Item No.	Item Description	Qty.	Drawing No.
80-0040	3000 psi Hose for Inside Extractor	4.75	54
80-0040	3000 psi Hose for Inside Extractor	4.75	55
10-0835-N	Nut for Pump Bolt on Extractor	4	56
Pump Fitting	Part of 80-0016 Pump		57
Pump Fitting	Part of 80-0016 Pump		58
80-0015	500 psi Pump Mount Plate	1	59
10-0833	Motor Manifold Bolts for Extractor	4	60
Pump Hose A	Part of 80-0016 Pump		61
Pump Fitting	Part of 80-0016 Pump		62
Pump Hose B	Part of 80-0016 Pump		63
10-0881	1/4" MNPT x 3/8" JIC 90 Degree	1	64
80-0016	500 psi Pump	1	65
10-0835-B	Pump Bolt 100 psi Extractor	4	66
10-0400-D	Keeper for Extractor Latch	1	67
10-0832	S/R Strap Bolts	4	68
10-0843	3/8" Black Hose for Extractor	6	69
80-0019	1/4 MNPT x 1/2 BARB 90 Degree for Extractor	1	70
80-0017	Bulk Head fitting for Extractor	3	71
10-0379	8-32 x 3/8 Screw	8	72
10-0400-C	Latch for Extractor	1	73
10-0868	1/4" Female QD for Extractor	1	74
10-0831	S/R Bracket for Extractor	2	75
10-0801-I	90 FPT for Extractor Heater	1	76
10-0878-B	1/4" MPT x 3/8" MJIC	1	77
10-0814-B	Manual Sensor for Heater	2	78
10-0852	1/4" 90 Degree Brass Elbow	1	79
10-1500-A	Heater Element 1000 Watt	2	80
10-0814	Sensor for Extractor Heater	2	81
10-0921	Aluminum Box for Dual Rod Heater	1	82
10-0901-A	600 psi Relief Valve for Heater	1	83
10-0920	Dual Rod SS Heat Exchanger Tube	1	84

New Equipment Warranty

Lifetime warranty on roto-molded body, 2-years on vacuum motors, 1-year on 500 psi pump and all electrical parts.

Warranty Policy

All equipment is inspected and tested before shipping from the manufacturer. All parts are warranted to be new and free from defects in workmanship and material, under normal use to the original retail purchaser. This warranty limits manufacturer's liability for defects in workmanship or materials for replacement of defective parts only. The manufacturer accepts no liability for incidental or consequential damages arisen from the use of any equipment, defective or not. This warranty is in lieu of all expressed or implied warranties and is extended only to the original retail purchaser. Manufacturer sales and service representatives are not authorized to waive or alter the terms of this warranty, or to increase the obligations of the manufacturer under the warranty. Parts replaced or repaired under this warrant are warranted for the remainder of the original warranty period.

Freight charges and travel charges to and from the service provider shall be covered for ninety (90) days from the purchase date. After the ninety (90) day period, these freight charges shall be paid by the equipment owner, subject to manufacturer discretion. Certain circumstances may require additional consideration. No travel charges shall be covered after ninety (90) days.

The manufacturer covers up to one (1) year (365 days) of service labor at the manufacturer's calculated hourly labor rate/repair time when performed by a manufacturer's authorized service provider. Ultimately, labor reimbursement costs are at the discretion of the manufacturer. After one (1) year, the original retail purchaser is responsible for all labor costs with no manufacturer reimbursement.

The original purchaser must contact the manufacturer to follow correct RMA/warranty procedures. They must have a copy of the RMA Sheet enclosed in the box with the returned item. No returns shall be authorized unless the proper RMA procedures are followed. It is the responsibility of the distributor to repair the customer's equipment as soon as possible. If the distributor does not have the facilities to repair the equipment, it may be shipped or taken to an authorized service center for repair.

The manufacturer charges a 15% restocking fee for any items that are being returned to stock. Items must be new, unused, free of damage and are only good for up to one (1) year. After one (1) year, the manufacturer does not accept the return of any item(s) for a reimbursed price.

Authorized warranty replacement parts need to come directly from the manufacturer. Any use of any other parts will void warranty. Jon-Don, Inc. does not reimburse for parts used by customer that were not supplied directly for the machine under warranty.

The customer must contact the manufacturer prior to working on or changing out of any parts, etc. The manufacturer must issue an RMA Sheet containing approved labor time and replacement parts. Do not send parts or equipment back to the manufacturer without an RMA Number and approval. No labor will be paid for, nor parts cost paid for or reimbursed, that have not previously been approved by the manufacturer. All warranty work must be approved and authorized to qualify, and appropriate warranty procedures must be followed.

The warranty starts on the purchase date by the original purchaser from an authorized Jon-Don, Inc. distributor, subject to proof of purchase. The Machine Registration Form must be completed online at the time of purchase. If proof of purchase cannot be identified, the warranty start date is ninety (90) days after the date of sale to an authorized Jon-Don, Inc. distributor.

Returned Material Authorization (RMA) Procedure

Original purchaser must contact the manufacturer to follow correct RMA/warranty procedures. Must include a copy of RMA Sheet enclosed in the box with returned item. No returns shall be authorized unless the proper RMA procedures are followed. It is the responsibility of the distributor to repair the customer's equipment as soon as possible. If the distributor does not have the facilities to repair the equipment, it may be shipped or taken to an authorized service center for repair.

Customer must contact the manufacturer prior to working on or changing out any parts, etc. Manufacturer must issue an RMA Sheet containing approved labor time and replacement parts. Do not send parts or equipment back to manufacturer without an RMA Number and approval. No labor will be paid for, nor part costs paid for or reimbursed that have not been previously approved by manufacturer. All warranty work must be approved and authorized to qualify and appropriate warranty procedures must be followed.

1.0 Safety Instructions

READ THIS MANUAL BEFORE USING YOUR CARPET EXTRACTOR.
KNOW THE PROPER OPERATION, CORRECT APPLICATIONS AND THE LIMITATIONS OF THIS EQUIPMENT BEFORE USE.

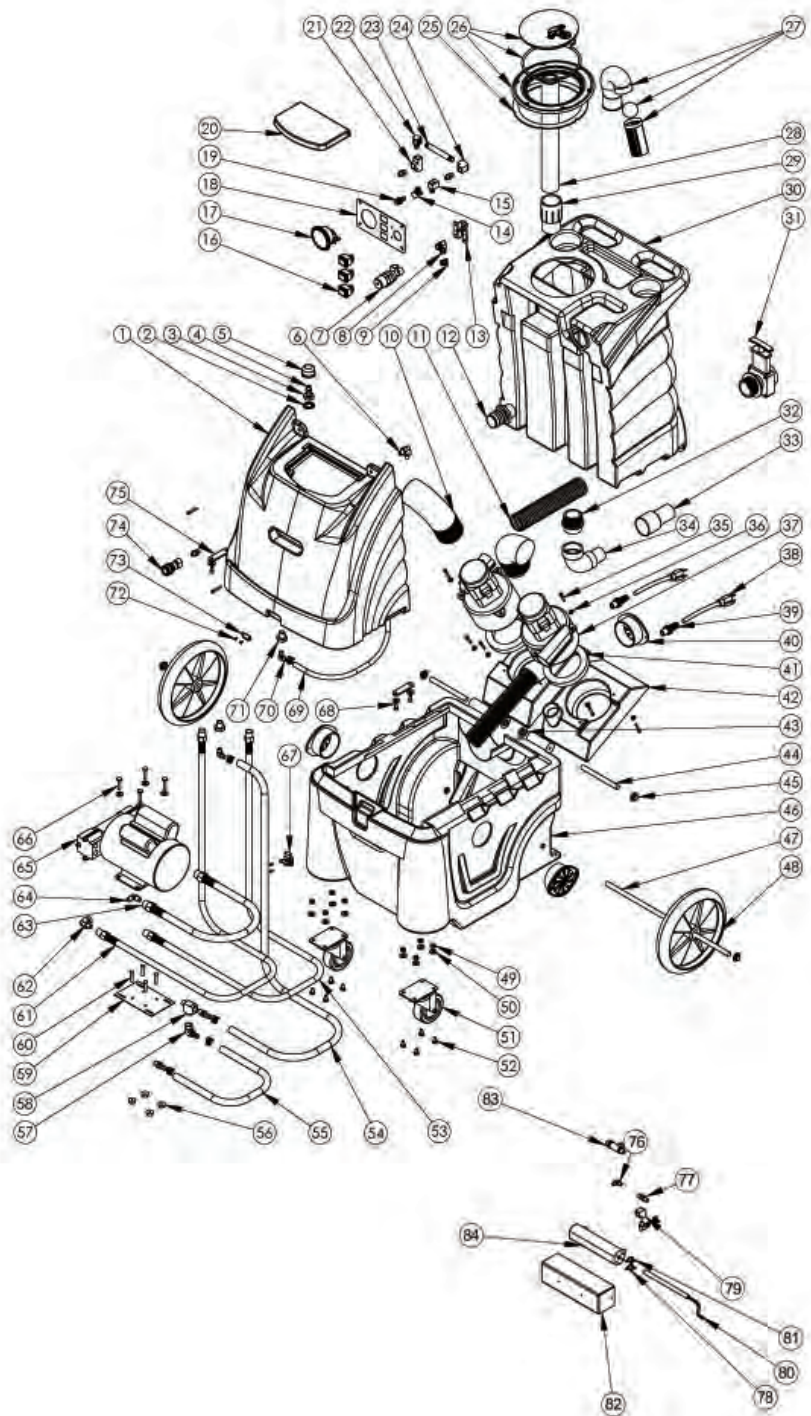
Reduce the Risk of Fire, Electric Shock or Injury:

- Use only as described in this manual. Use only the attachments recommended by the manufacturer.
- Test all outlets with an outlet tester before plugging machine into any outlet. Plug cord into the nearest grounded outlet.
- DO NOT unplug by pulling on the cord, grasp the plug. DO NOT pull unit by the cord.
- Keep cord away from heated surfaces.
- Never attempt adjustments or repairs while the machine is plugged in.
- DO NOT use if cord or plug are damaged.
- DO NOT use outdoors, in standing water on wet surfaces.
- Pay close attention when using machine near children.
- DO NOT pick up flammable or combustible materials or use machine where they may be present.
- DO NOT leave machine outdoors, in extreme heat or cold. Harsh weather elements will damage components and void warranty.
- Lift using only the appropriate handles.
- Always wear the appropriate clothing and safety equipment when operating the machine.
- Keep all body parts, hair and loose clothing away from openings and moving parts.
- Use extra care when cleaning stairs. Never move the machine up or down stairs with fluid in the machine.
- Use common sense to protect yourself and others from injury when using the machine.

9.0 Machine Parts List

Item No.	Item Description	Qty.	Drawing No.
SN-12-ST-BLUGRAN	12-Gallon Solution Tank - Blue Granite	1	1
80-0017	Part of Bulkhead Fitting	1	2
80-0017	Part of Bulkhead Fitting	1	3
10-0846	1/4" MPT Hex Nipple for Extractor	1	4
10-0845	1/4" Strainer for Extractor	2	5
80-0011	90 Degree Street Elbow	1	6
80-0016-REG	500 psi Regulator	1	7
80-0026	3/8 Barb x 1/4 MPT 90 Degree	3	8
10-0826	3/4" Hose Clamp for Extractor	5	9
80-0001	Extractor Exhaust Hose	0.4	10
80-0003-A	1-1/2" Black Lined Gray Hose	2	11
10-0806	1-1/2" Grey Hose Barb Fitting for Extractor	1	12
Bracket	Part of 80-0016 Pump	1	13
80-0006	45 Degree Street Elbow	1	14
80-0011	90 Degree Street Elbow	1	15
10-0803-H	Splashproof Heater Switch-C6053ALBR2	1	16
10-0803	Splashproof Switch for Extractor	2	16
80-0059	500 psi Gauge	1	17
80-0013	500 psi Switch Plate	1	18
Connector	Part of 80-0059 Gauge		19
SN-12-L-BLUGRAN	12-Gallon Lid - Blue Granite	1	20
80-0010	1/4" Brass Tee	2	21
80-0011-2	90 Degree Street Elbow	1	22
80-0004	1/4" x 4" Brass Nipple	1	23
10-0852	1/4" 90 Degree Brass Elbow	3	24
10-0804-A	Hatch Cover Gasket for Extractor	1	25
10-0804	Hatch Cover for Extractor	1	26
80-0012	Float Assembly for Extractor	1	27
10-0416-A	1-1/2" Black ABS Stand Pipe	1.3	28
80-0008	1.5 PVC Female Adapter	1	29
SN-12-RT-BLUGRAN	12-Gallon Recovery Tank - Blue Granite	1	30
10-0805	Dump Valve for Extractor	1	31
10-0849	1-1/2" ABS Fitting	1	32
10-0155	Hose Cuff Straight	1	33
10-0848-B	1-1/2" 90 Degree ABS Street Elbow	3	34
10-0833	Motor Manifold Bolts for Extractor	6	35
80-0116	Spacer for Motor Screw	6	36
10-0811	2-Stage Extractor Motor	2	37
10-0838	Pigtail for Extractor (Pigtail Cord only - No Strain Relief, Nut or connectors)	2	38
10-0850	Strain Relief for Extractor	2	39
10-0822	Exhaust Grate for Extractor	3	40
10-1030-S2	2-Stage Extractor Motor Gasket	2	41
SN-12-MFLD	Extractor Motor Manifold	2	42
10-0830	Hinge Keeper for Extractor	2	43
10-0821	Extractor Hinge	2	44
10-0820	End Cap for Rod on Extractor	4	45
SN-12-MB-BLKGRAN	12-Gallon Motor Base - Black Granite	1	46
10-0836	19" Axle for Extractor	1	47
10-0807	Wheels for Extractor	2	48
10-0834	Pump Flat Washer	18	49
10-0835-N	Nut for Pump Bolt on Extractor	8	50
10-0808	Caster for Extractor	2	51
10-0816	Caster Bolt 1/4-20 x 1/2 Hex Bolt	12	52
80-0040	3000 psi Hose for Inside Extractor	4.75	53

8.0 Machine Schematic Drawing



2.0 Grounding Instructions

DANGER: IMPROPER GROUNDING METHOD CAN RESULT IN A RISK OF ELECTRIC SHOCK.

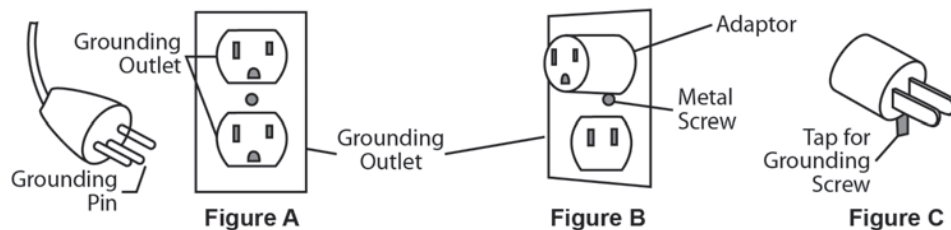
Electrical equipment must be grounded. If the machine should malfunction or breakdown, grounding provides a path of least resistance for electrical current to reduce the risk of electric shock. The Carpet Extractor is equipped with a cord containing a grounding conductor and grounding plug. The plug must be inserted into an appropriate outlet that is properly installed and grounded in accordance with all local codes and ordinances.

If repair or replacement of the cord or plug is necessary, **DO NOT** connect the grounded wire to a flat bed terminal. The grounding wire is the wire with insulation and an outer green surface, with or without yellow stripes.

Grounding Method

The equipment is for use on a normal 120 Volt circuit. It includes a grounded plug (plug shown in Figure A). A temporary adapter (Figure B and C) may be used to connect this plug into a 2-pole receptacle (Figure B) if a properly grounded outlet is not available.

The temporary adapter should be used only until a properly grounded outlet (Figure A) can be installed by a qualified electrician. The green colored rigid ear lug or the like extending from the adapter must be connected to a permanent ground, such as a properly grounded outlet box cover. Whenever an adapter is used, it must be held in place by a metal screw.



WARNING:

Improper connection of the equipment grounding conductor can result in a risk of electric shock. Check with a qualified electrician or service person if you are in doubt as to whether the outlet is properly grounded. **DO NOT** modify the plug provided with the equipment. If the plug will not fit into the outlet, have a proper outlet installed by a qualified electrician.

NOTE: In Canada, the use of a temporary adapter is not permitted by the Canadian Electrical Code.

3.0 Set-Up / Prepare Unit for Use

DO NOT USE ON WET SURFACES. DO NOT EXPOSE TO RAIN. STORE INDOORS.

- All Carpet Extractors, no matter what the time of year, are shipped with antifreeze in the solution lines. Prior to first use, fill the tank with one quart of warm water. Attach the hose and using the hand tool wand, flush out the system by spraying the one quart of water through the pump.
- Attach the 1-1/2 inch vacuum hose and the brass quick disconnect.
- Fill the base unit (the recovery tank must be removed) with warm water (less than 100 degrees Fahrenheit). Fill to approximately 4 inches from the top. Use a liquid detergent made for carpet cleaning or upholstery. Read and mix to the dilution ratios as directed.
- Be sure to replace any filters back into the machine prior to use.
- Do not use citrus acid, buterol or harsh degreasers inside the machine.

3.1 Electrical

Plug cord(s) into 20 AMP grounded wall outlet(s). 20 AMP circuits are normally found in kitchens and bathrooms. Never remove ground prong from the plug. If a circuit breaker trips during operation, turn machine off, reset the breaker and move the electrical cord to a different outlet and resume operation.

3.2 Vacuum System

The extractor uses a dual vacuum motor system that provides outstanding water lift and air flow.

Vacuum Float Assembly Warning System: the float assembly on the vacuum stand pipe prevents the waste tank from overflowing the stand pipe and damaging the vacuum motors. Motors will reach a fast, high-pitched sound alerting you when the recovery tank is about to over flow. When this happens, immediately turn OFF the vacuum switches and empty the waste tank.

The float assembly has a filter to prevent lint and debris from entering the stand pipe. Refer to the “Maintenance” section for removal and proper cleaning.

Recovery Tank: the vacuum system requires the use of an external filter. The clear view in-line filter is included with the machine and must be used on every job.

It is also necessary to use a defoamer to eliminate foam build-up in the recovery tank which could lead to foam/moisture entering the vacuums and contributing to early failure of the vacuum motors.

If moisture does enter the vacuum motors, contact an authorized service center. To prevent moisture from damaging the vacuum motors during storage, empty the recovery tank and store with the lid open.

6.0 Storage and Freeze Protection Continued

Recommended Procedure for Storage Continued

- Disconnect the solution hose from the chemical feed and allow the system to bypass for 10 minutes. This will work antifreeze into the pressure gauge.
- Attach and wands and hand tools that will also be stored with the Carpet Extractor. Open the valve for 30 seconds, directing the spray to the solution tank. Disconnect the hose and with the valve open and the jets pointing down, depress the dimple on the male QD. This will drain the solution out of the tool. Drain thoroughly before storing.
- Turn off the pump and disconnect all hoses and tools. Vacuum out the solution tank and thoroughly drain the recovery tank and vacuum hose.

To return to service, flush the pressure system by repeating the above steps, using fresh water in place of antifreeze.

7.0 Trouble Shooting Guide

Never operate this Carpet Extractor when the equipment is not performing as expected or when any part is visibly damaged. When repair is needed, take the equipment to an authorized service center.

System	Problem	Possible Cause	Remedy					
Vacuum System	No Vacuum / Weak Vacuum	<ol style="list-style-type: none"> 1. Vacuum Tank Full 2. Float Assembly Tank Screen Dirty 3. Float Ball Stuck 4. Damaged or Loose Vacuum Hose 5. Dump Valve Open 6. Access Lid not Sealed 7. Vacuum Hose Clogged 8. Air Intake Grid Clogged 9. Leak in Recovery Tank 10. Water Coming out of Vacuum Exhaust 	<ol style="list-style-type: none"> 1. Empty Tank 2. Clean the Screen with Water 3. Tap Float to Unstick then Clean 4. Attach or Replace 5. Close Valve 6. Replace Gasket 7. Clear Debris 8. Clean 9. Clean and Dry Area, Patch with Silicone 10. Use a Low Foaming Detergent 					
	Electrical System	<table border="1"> <tr> <td>Unit will not Turn On</td> <td> <ol style="list-style-type: none"> 1. Extension Cord not Plugged In 2. Switch not in the "On" Position 3. Building Circuit Overloaded 4. Wiring Connections Loose </td> <td> <ol style="list-style-type: none"> 1. Check if Machine and Cord are Plugged In 2. Check Switches, Replace if Necessary 3. Reset Circuit 4. Unplug Machine and Check for Loose Wires </td> </tr> <tr> <td>Burning Smell</td> <td> <ol style="list-style-type: none"> 1. Vacuum Motor Hung Up 2. Pump Motor Hung Up </td> <td> <ol style="list-style-type: none"> 1. Replace Vacuum Motor 2. Replace Pump </td> </tr> </table>	Unit will not Turn On	<ol style="list-style-type: none"> 1. Extension Cord not Plugged In 2. Switch not in the "On" Position 3. Building Circuit Overloaded 4. Wiring Connections Loose 	<ol style="list-style-type: none"> 1. Check if Machine and Cord are Plugged In 2. Check Switches, Replace if Necessary 3. Reset Circuit 4. Unplug Machine and Check for Loose Wires 	Burning Smell	<ol style="list-style-type: none"> 1. Vacuum Motor Hung Up 2. Pump Motor Hung Up 	<ol style="list-style-type: none"> 1. Replace Vacuum Motor 2. Replace Pump
Unit will not Turn On	<ol style="list-style-type: none"> 1. Extension Cord not Plugged In 2. Switch not in the "On" Position 3. Building Circuit Overloaded 4. Wiring Connections Loose 	<ol style="list-style-type: none"> 1. Check if Machine and Cord are Plugged In 2. Check Switches, Replace if Necessary 3. Reset Circuit 4. Unplug Machine and Check for Loose Wires 						
Burning Smell	<ol style="list-style-type: none"> 1. Vacuum Motor Hung Up 2. Pump Motor Hung Up 	<ol style="list-style-type: none"> 1. Replace Vacuum Motor 2. Replace Pump 						
Pump System	Pump is not Running Properly	<ol style="list-style-type: none"> 1. No Power to the Pump 2. Jets on Wand are Clogged 3. In-Line Water Filter is Clogged 4. Debris in Solution Tank Covering Inlet 5. Kinked or Loose Hose 6. Pump Failed 7. Quick Disconnects are not Completely Locked Together 8. Heater is Clogged with Deposits 9. Pump is Pulsating 10. Auto Prime Valve is Open 	<ol style="list-style-type: none"> 1. Check the Electrical System 2. Clean Jet Filters 3. Clean In-Line Filter 4. Clear Debris 5. Check and Replace Hoses if Necessary 6. Replace Pump 7. Snap Quick Disconnects Together 8. Flush Heater with System Maintainer or Replace if Necessary 9. Check for Clogged Jets and Clean 10. Close Valve 					

5.4 Clean Pump Inlet Filter Continued



1/4" Acorn Strainer

Part No. 10-0845

5.5 WD-40 Vacuum Motors

Should moisture ever enter the vacuum motors, completely drain the recovery tank, open the recovery tank lid, remove the vacuum float assembly, turn on both vacuum motors and spray a five (5) second burst of WD-40 into the standpipe. Continue to run the vacuum motors for at least three (3) minutes.

To prevent moisture from damaging the vacuum motors during storage, empty the recovery tank and store with the lid open.

6.0 Storage and Freeze Protection

You must winterize your Carpet Extractor to protect the pump system from freezing and also damage being caused to fittings and valves. Damage due to freezing is not covered under the Warranty. Store your extractor in temperatures over 40 degrees Fahrenheit. If you plan on storing your extractor in freezing conditions or for a long period of time, the following procedure should help prevent your Carpet Extractor from freezing and prevent pump and seals from drying out.

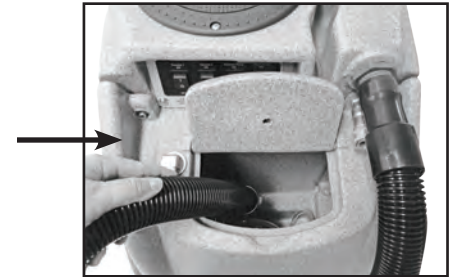
Recommended Procedure for Storage

- In a separate container, mix 1/2-gallon of water with 1/2-gallon of automotive radiator antifreeze (ethylene glycol type). Mix well and pour into the solution tank.
- Connect the pressure hose to the female quick disconnect (QD) on the front of the machine. Insert an open-ended male QD into the female QD on the end of the pressure hose.
- When primed, turn down the pressure to 100 PSI.
- Disconnect the open-ended QD and connect the solution hose to the male QD at the auto-fill/chemical feed connection. **CAUTION:** applying high pressure (over 100 PSI) to the chemical feed system will damage the mechanism.
- With the chemical feed supply tube at the bottom of the solution tank, turn on the pump and allow to circulate for 10 minutes. Check to make sure the chemical supply tube is drawing the antifreeze solution. This will introduce antifreeze into the chemical feed system.

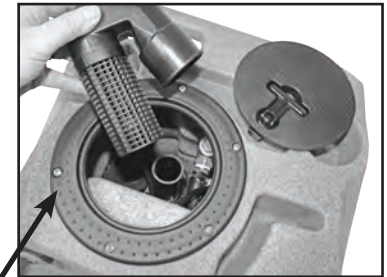
4.0 Shutdown Procedures

- If using the auto-fill system, turn the water supply OFF before finishing each job. This will allow use of the water and chemicals already in the tank and will reduce the amount of excess water to be disposed of later.
- When finished cleaning, turn OFF all switches.
- If the auto-fill system was used and there is still water in the solution tank, push the float down to release the water inlet hose pressure before disconnecting the hose from the faucet. Disconnect the water inlet hose from the quick disconnect on the front of the machine.
- Disconnect the solution hose and vacuum hose from the cleaning tool. Pull the valve trigger to release pressure from the hose before disconnecting the solution hose from the cleaning tool.
- Disconnect the clear view in-line filter from the vacuum hoses and clean the filter as needed.

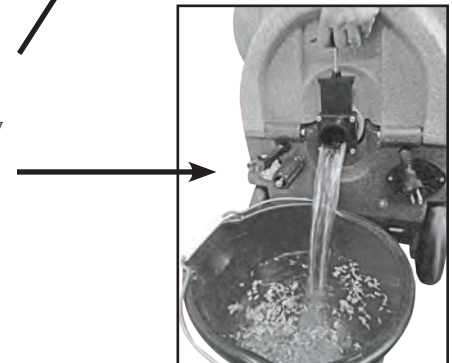
- Disconnect the vacuum hose and solution hose from the machine.
- If water remains in the solution tank, use the short vacuum hose and vacuum the excess water from the tank.
- If the auto-fill system was utilized, place the chemical feed hose back into the solution tank.



- If the dump-out system was used: turn the waste pump switch ON to pump out any remaining water from the recovery tank; turn switch OFF, remove the dump pump-out hose from the outlet fitting and replace the cap; roll up the hose toward drain to remove the remaining water from the hose; connect ends of hose together to prevent dirty water from dripping from hose during transport.



- Disconnect the power cords from the outlets and from the machine.
- Remove the float assembly from the recovery tank and clean filter as needed. Replace float assembly and tank lid.
- Drain any remaining water from the recovery tank and dispose of in a sanitary drain. **DO NOT** use the same bucket to drain the tank that you used to fill the tank.
- Roll up all hoses and tools. Collect and store extractor, all tools and accessories.



5.0 Maintenance

Regular maintenance is required to keep your Carpet Extractor in proper working condition. Failure to properly maintain your machine could void warranty. Thoroughly clean all equipment and accessories after each use:

- Rinse the solution and recover tanks with clean water.
- Flush the pump system with clean water, including all hoses and wand(s).
- Do not allow water to remain in the tanks after use.
- Lubricate all quick disconnects with WD-40 or similar lubricant.
- Clean vacuum float assembly screen.

WARNING: Disconnect electrical power cord before performing any service or maintenance inside the machine base or before testing or repairing switches or power cords. Failure to do so may result in severe personal injury or death.

Operation	Interval
Clean Chemical Feed Filter	Daily- After Each Job
Clean Vacuum Assembly Screen	Daily- After Each Job
Rinse Out Recovery Tank	Daily
Flush Solution Tank and Pump	Daily
Clean Pump-Inlet Filter	Weekly - As Needed

5.1 Clean Fresh Water Tank Filter

The fresh water tank filter is located at the bottom of the solution tank. Unscrew the filter counterclockwise and rinse with fresh water. If necessary, use a tooth brush to remove detergent build-up. Note, a heavy build-up is a warning sign that the solution system should be flushed. See the “Flush Chemical System” section.

5.2 Clean Vacuum Float Assembly Screen

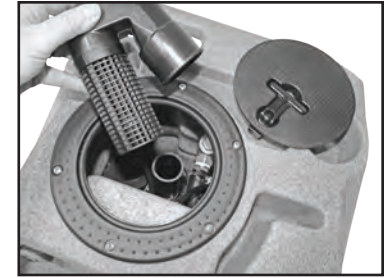
Inside the recovery tank, on top of the stand pipe, is the vacuum float assembly. It functions to prevent debris and water from being sucked into the vacuum motors. Operating the Carpet Extractor without the float assembly or with a poorly maintained assembly, will greatly decrease the life of the vacuum motors and will void the warranty.

If debris builds up on this filter, it will reduce the vacuum air flow and may cause a significant decrease in the rate of water recovery. If debris prevents the float ball from moving or seating inside the assembly, it may not stop the airflow when the tank fills with water and the water will be sucked in the vacuums and blow out the exhaust.

To clean, twist off the float assembly from the stand pipe and clean the screen. Pull fibers and lint off and rinse with clean water. Push the assembly back onto the stand pipe and replace the recovery tank lid.

5.2 Clean Vacuum Float Assembly Screen Continued

This screen should be cleaned frequently if the Carpet Extractor is being operated in an environment which has an abnormal build-up of lint and debris, such as cleaning newly installed carpet. Loss of vacuum is most normally associated with lint build-up in this filter at the top of the vacuum stand pipe.

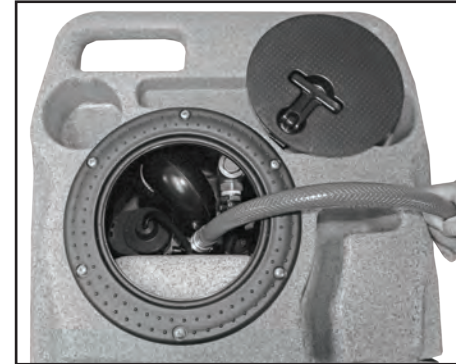


Vacuum Float Assembly

5.3 Rinse Out Recovery Tank

Build-up of fine silt and debris can damage the auto-dump pump and dump valve. Clean out the recovery tank on a regular basis to extend the life of these components as well as keep the tank and machine smelling better.

To rinse out recovery tank, remove the recovery tank lid and open the dump valve. Place a bucket under the dump valve. Use a hose to rinse the dirt and debris out of the recovery tank. Close the dump valve and spray the tank with deodorizer or disinfectant. Proceed to waste pump cleaning and replace the recovery tank lid. Dispose of dirty water and debris.



5.4 Clean Pump Inlet Filter

CAUTION: before proceeding with this procedure, make sure both the power cords are disconnected.

- To examine the filter, open the solution tank lid on the front of the machine. The filter is in the bottom of the solution tank.
- Grasp the filter cap and unscrew the filter from the brass nipple by turning counterclockwise. Clean or replace the filter as needed.
- Tilt the tanks back onto the base and secure the latch.

